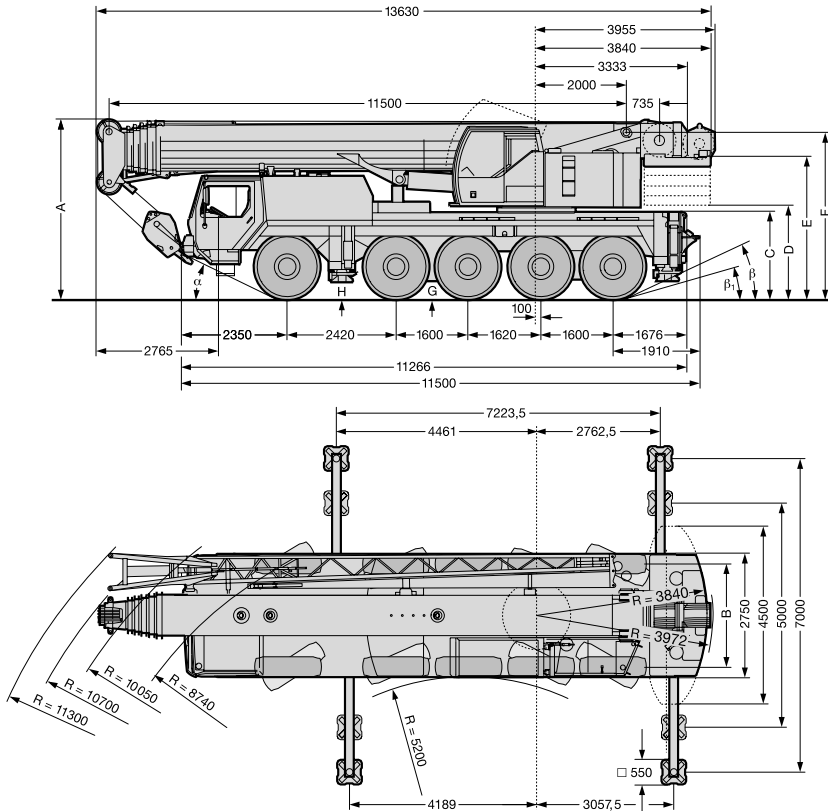


# Liebherr LTM 1100/2

## Dimensions



**100**  
Tonne

All Terrain  
Cranes

Tyre Width	Dimensions (mm)											
	A	*A 100mm	B	C	D	E	F	G	H	$\alpha$	$\beta$	$\beta^1$
14.00 R25	3945	3845	2350	1890	2085	3090	3655	380	295	23°	23°	16°
16.00 R25	3995	3895	2310	1940	2035	3130	3705	430	345	25°	25°	18°

\* lowered

## Load Reductions (Fly Jib Stowed)

Boom Length (m)	11.5	15.2	19	22.7	26.4	30.1	33.9	37.6	41.3	45	48.8	52
Load to be Deducted (t)	0.9	0.7	0.6	0.5	0.4	0.4	0.3	0.3	0.3	0.3	0.2	0.2

## Hookblock

Capacity (t)	100	90	59	26	8.8
Weight (t)	1.24	0.7	0.7	0.45	0.25

The charts that have been included have been reproduced from manufacturer specifications, and while every effort has been made to ensure their accuracy, we do not accept any responsibility for errors or omissions. We also need to draw your attention to the guidance notes on page 47 to assist you with your crane selection.

# Liebherr LTM 1100/2

## Lifting Capacities on Telescopic Boom

Main Boom (m)	35t Counterweight												
	11.5	15.2	19	22.7	26.4	30.1	33.9	37.6	41.3	45	48.8	52	
Radius (m)	*												
3	95	83											
3.5	86	80	68	64									
4	78	73	68	64	61								
4.5	71	67	67	65	59	51							
5	65	62	61	61	57	49.5	42						
6	55	53	53	53	52	46.5	39	33	28				
7	47	46	46	46	45.5	43.5	37	31	26.6	22.3			
8	41	39.5	40	39.5	39	39.5	35	29.2	25.3	21.4	18.9		
9	36	34.5	35	34.5	35	34.5	33.5	27.6	23.9	20.4	18	14.5	
10			31	30.5	31.5	31.5	31	26.1	22.7	19.5	17.3	14	11.4
12			24.9	25.3	25.3	25.1	24.7	23.1	20.5	17.8	16	13.2	10.7
14				20.8	20.8	20.6	20.2	19.9	18.3	16.3	14.9	12.6	10.1
16				17.4	17.3	17.1	16.7	16.8	16.2	14.7	13.8	12	9.6
18					14.7	14.5	14.2	14.4	14	13.3	12.5	11.2	9.1
20					12.6	12.4	12.7	12.3	11.9	11.6	11.4	10.4	8.6
22						10.7	11.1	10.7	10.2	10.3	10.1	9.6	8.1
24						9.5	9.7	9.5	9.4	9.1	8.8	8.9	7.6
26							8.5	8.4	8.2	8.2	8.1	7.8	7.1
28							7.6	7.7	7.3	7.3	7.2	6.8	6.6
30								6.9	6.7	6.5	6.4	5.7	5.7
32									6.1	5.6	5.5	5.1	5.1
34									5.4	5.1	4.9	4.6	4.6
36										4.7	4.5	4.1	4.1
38										4.3	4.1	3.7	3.7
40											3.7	3.4	3.3
42												3.4	3.1
44													2.8
46													2.5
48													2.2

\* Over rear

The charts that have been included have been reproduced from manufacturer specifications, and while every effort has been made to ensure their accuracy, we do not accept any responsibility for errors or omissions. We also need to draw your attention to the guidance notes on page 47 to assist you with your crane selection.

# Liebherr LTM 1100/2

## Lifting Capacities on Telescopic Boom

Main Boom (m)	26t Counterweight												
	11.5	15.2	19	22.7	26.4	30.1	33.9	37.6	41.3	45	48.8	52	
Radius (m)	*												
2.5	100												
3	94	83											
3.5	84	79	68	64									
4	76	72	68	64	61								
4.5	59	66	66	65	59	51							
5	63	60	61	60	57	49.5	42						
6	53	51	51	51	51	46.5	39	33	28				
7	45	43	43.5	43	42.5	43	37	31	26.6	22.3			
8	38.5	37	37.5	37	37.5	37.5	35	29.2	25.3	21.4	18.9		
9	33.5	32	32.5	32	33	33	31.5	27.6	23.9	20.4	18	14.5	
10			28.3	29	29	28.9	27.7	26.1	22.7	19.5	17.3	14	11.4
12			22.3	22.8	22.8	22.6	22.1	21.3	20.1	17.8	16	13.2	10.7
14				18.4	18.4	18.2	17.9	18.2	17.1	16.3	14.9	12.6	10.1
16				15.3	15.2	15	14.7	15	14.4	13.7	13.7	12	9.6
18					12.8	12.7	13	12.6	12.2	12.3	11.7	11.2	9.1
20					11	10.8	11.1	11	10.8	10.5	10.4	10.1	8.6
22						9.3	9.6	9.7	9.3	9.3	9.3	8.8	8.1
24						8.1	8.6	8.5	8.3	8.1	8	7.6	7.6
26							7.7	7.4	7.3	7.1	6.9	6.6	6.5
28							6.8	6.5	6.4	6.2	5.8	5.4	5.4
30								5.7	5.6	5.3	5.1	4.8	4.8
32									5	4.8	4.6	4.2	4.2
34									4.6	4.3	4.1	3.8	3.8
36										3.9	3.7	3.4	3.3
38										3.5	3.3	3	2.9
40											2.6	2.6	2.6
42												2.2	2.2
44												1.9	1.9
46												1.6	1.6
48													1.4

\* Over rear



**100**  
Tonne

All Terrain  
Cranes

# Liebherr LTM 1100/2

## Lifting Capacities on the Folding Jib

35t Counterweight																			
Main Boom (m)	11.5			37.6			41.3			45			48.8			52			
Folding Jib (m)	10.8			10.8			10.8			10.8			10.8			10.8			
Radius (m)	0°	20°	40°	0°	20°	40°	0°	20°	40°	0°	20°	40°	0°	20°	40°	0°	20°	40°	
3	17.5																		
3.5	17.3																		
4	17																		
4.5	16.8																		
5	16.5																		
6	15.2	14.3																	
7	14	13.7																	
8	12.7	13.2		14.1															
9	11.7	12.2	11	13.7				12.6											
10	11.9	11.3	10.1	13.3				12.4			10								
12	9.4	9.9	8.9	12.7	11.3		12			9.5			7.7				6.3		
14	8.5	8.4	7.7	12.2	10.8		11.6	10.4		9.1	8.6		7.4				6		
16	7.5	7.7	7	11.3	10.1	8.6	11	9.9	8.7	8.7	8.2		7.1	6.7			5.7	5.4	
18	6.6	6.9	6.6	10.4	9.5	8.3	10.2	9.4	8.3	8.2	7.8	7.5	6.7	6.4	6.2	5.3	5.1	5.1	5.1
20				9.6	8.9	7.9	9.4	8.9	7.9	7.8	7.3	7.1	6.3	6	5.9	5.1	4.9	4.8	
22				8.8	8.4	7.6	8.8	8.5	7.6	7.4	7	6.8	6	5.7	5.6	4.8	4.6	4.6	
24				8	7.9	7.2	8.1	8	7.3	7.1	6.6	6.4	5.7	5.5	5.4	4.6	4.4	4.4	
26				7.3	7.3	6.7	7.3	7.5	7	6.7	6.3	6.1	5.4	5.2	5.2	4.4	4.2	4.2	
28				6.5	6.6	6.4	6.3	6.7	6.8	6.2	6	5.9	5.2	5	5	4.2	4	4	
30				5.6	6	5.8	5.6	5.7	5.7	5.2	5.6	5.7	5	4.8	4.8	4	3.8	3.8	
32				4.9	5.3	5.3	5	5.3	5.4	4.8	4.9	5.1	4.8	4.6	4.6	3.8	3.7	3.7	
34				4.5	4.7	4.8	4.5	4.7	4.9	4.5	4.4	4.6	4.2	4.5	4.5	3.6	3.5	3.5	
36				4.1	4.2	4.3	4.1	4.3	4.4	4.1	4.3	4.3	3.8	4	4.2	3.5	3.4	3.4	
38					3.8	3.9	3.9	3.9	4	3.7	3.9	4	3.4	3.6	3.7	3.3	3.3	3.3	
40					3.6	3.7	3.6	3.7	3.8	3.4	3.5	3.6	3	3.2	3.4	3	3.2	3.2	
42					3.5	3.5	3.3	3.4	3.5	3.1	3.2	3.3	2.7	2.9	3	2.7	2.8	2.9	
44					3.3	3.3	3	3.1	3.2	2.8	2.9	3	2.4	2.6	2.7	2.4	2.5	2.6	
46							2.8	2.8	2.9	2.5	2.6	2.7	2.2	2.3	2.4	2.1	2.2	2.3	
48							2.5	2.6		2.3	2.4	2.4	1.9	2.1	2.1	1.9	2	2.1	
50										2.1	2.1	2.1	1.7	1.8	1.9	1.7	1.8	1.8	
52										1.9				1.5	1.6	1.6	1.5	1.6	1.6
54														1.4	1.4	1.4	1.3	1.4	1.4
56														1.2			1.1	1.2	1.2
58																	0.9	1	1

The charts that have been included have been reproduced from manufacturer specifications, and while every effort has been made to ensure their accuracy, we do not accept any responsibility for errors or omissions. We also need to draw your attention to the guidance notes on page 47 to assist you with your crane selection.

# Liebherr LTM 1100/2

## Lifting Capacities on the Folding Jib

35t Counterweight																			
Main Boom (m)	11.5			37.6			41.3			45			48.8			52			
Folding Jib (m)	19			19			19			19			19			19			
Radius (m)	0°	20°	40°	0°	20°	40°	0°	20°	40°	0°	20°	40°	0°	20°	40°	0°	20°	40°	
4.5	7.7																		
5	7.6																		
6	7.4																		
7	7.3																		
8	7.1																		
9	6.7																		
10	6.3	4.9		5.5															
12	5.5	4.4		5.5			5.2			4.9			4.4						
14	5	4.1		5.4			5.2			4.9			4.4				3.7		
16	4.5	3.8	3.3	5.4	4.3		5.2			4.9			4.4				3.7		
18	4.1	3.5	3.1	5.2	4.2		5.1	4.2		4.8			4.4				3.6		
20	3.7	3.3	3	5	4		5	4.1		4.7	4		4.3	3.9			3.6		
22	3.5	3.2	2.9	4.9	3.8	3.2	4.8	3.9	3.2	4.6	3.9		4.2	3.8			3.5	3.4	
24	3.3	3	2.9	4.7	3.7	3.1	4.7	3.8	3.2	4.5	3.8	3.2	4.1	3.7			3.4	3.3	
26	3.1	2.9	2.8	4.5	3.6	3.1	4.6	3.6	3.1	4.4	3.6	3.1	4	3.6	3.1	3.1	3.2	3.2	3.1
28	2.9			4.3	3.5	3	4.4	3.5	3.1	4.4	3.5	3.1	3.8	3.5	3.1	3.1	3	3	3.1
30				4.1	3.4	3	4.2	3.4	3	4.2	3.4	3	3.7	3.5	3.1	3	2.9	2.9	2.9
32				4	3.3	3	4.1	3.3	3	4.1	3.3	3	3.6	3.4	3	2.9	2.8	2.8	2.8
34				3.8	3.3	3	3.9	3.3	3	4	3.3	3	3.5	3.3	3	2.8	2.7	2.7	2.7
36				3.7	3.2	2.9	3.8	3.2	3	3.8	3.2	3	3.4	3.3	3	2.7	2.6	2.6	2.6
38				3.5	3.1	2.9	3.6	3.2	3	3.6	3.2	3	3.3	3.2	3	2.6	2.5	2.5	2.5
40				3.3	3.1	2.8	3.5	3.1	3	3.2	3.1	3	3.1	3.1	3	2.5	2.4	2.4	2.4
42				3.1	3	2.7	3.2	3.1	3	3	2.9	3	2.9	3	3	2.4	2.3	2.4	2.4
44				2.9	2.9	2.6	2.9	3.1	3	3	2.8	3	2.6	2.9	3	2.3	2.3	2.3	2.3
46				2.6	2.7	2.5	2.8	2.9	3	2.7	2.7	2.8	2.4	2.7	2.9	2.2	2.2	2.2	2.2
48				2.4	2.5	2.4	2.7	2.7	2.8	2.5	2.4	2.8	2.1	2.4	2.6	2.1	2.1	2.2	2.2
50				2.2	2.4	2.3	2.5	2.6	2.7	2.2	2.2	2.5	1.9	2.1	2.3	1.8	2.1	2.1	2.1
52				2	2.2		2.3	2.4	2.4	2	2	2.3	1.7	1.9	2	1.6	1.9	2	2
54							2.1	2.2	2.2	1.8	1.8	2	1.5	1.7	1.8	1.4	1.6	1.8	1.8
56							1.9	2		1.7	1.6	1.8	1.4	1.4	1.6	1.3	1.5	1.6	1.6
58										1.5		1.6	1.2	1.3	1.4	1.1	1.3	1.4	1.4
60										1.4			1.1	1.2	1.2	1	1.1	1.2	1.2
62													0.9	1	1	0.8	0.9	1	1
64																	0.8	0.8	0.8

**100**  
Tonne  
All Terrain  
Cranes

The charts that have been included have been reproduced from manufacturer specifications, and while every effort has been made to ensure their accuracy, we do not accept any responsibility for errors or omissions. We also need to draw your attention to the guidance notes on page 47 to assist you with your crane selection.