

# 25 Tonne

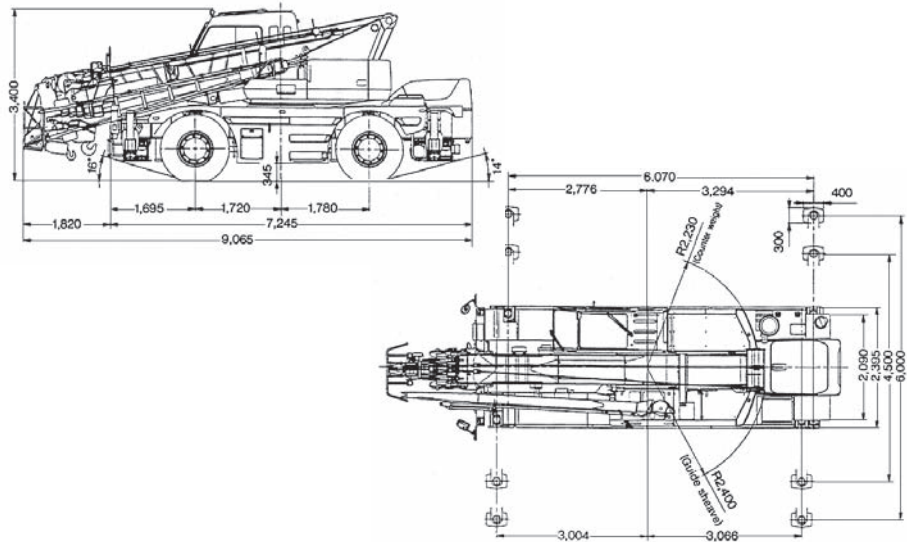
City Crane

AINSCOUGH CRANE HIRE LIMITED

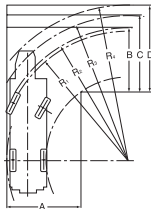
# Kato CR-250

City & Low  
Headroom Cranes

## Dimensions



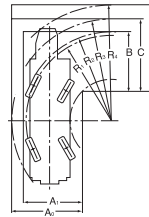
Right turn in two-wheel steering mode



- R<sub>1</sub> = 8.30m (Minimum turning radius)
- R<sub>2</sub> = 8.49m (Turning radius of extremely outer tire)
- R<sub>3</sub> = 9.25m (Chassis turning radius)
- R<sub>4</sub> = 9.93m (Boom end turning radius)

- A = 4.85m (Width of entrance)
- B = 4.13m (Width of wheel exit)
- C = 4.89m (Width of chassis exit)
- D = 5.56m (Width of exit at end of boom)

Right turn in four-wheel steering mode



- R<sub>1</sub> = 5.00m (Minimum turning radius)
- R<sub>2</sub> = 5.19m (Turning radius of extremely outer tire)
- R<sub>3</sub> = 5.95m (Chassis turning radius)
- R<sub>4</sub> = 6.77m (Boom end turning radius)

- A<sub>0</sub> = 4.16m (Width of entrance)
- A<sub>1</sub> = 3.48m (Width of wheel entrance)
- B = 3.44m (Width of wheel exit)
- C = 4.20m (Width of chassis exit)
- D = 5.02m (Width of exit at end of boom)

## Hookblock

Capacity (t)	22	2.6
Weight (t)	0.18	0.1

The charts that have been included have been reproduced from manufacturer specifications, and while every effort has been made to ensure their accuracy, we do not accept any responsibility for errors or omissions. We also need to draw your attention to the guidance notes on page 47 to assist you with your crane selection.

CL6



# 25 Tonne

City Crane

AINSCOUGH CRANE HIRE LIMITED

# Kato CR-250

City & Low  
Headroom Cranes

## Fly Jib Duties

28.0m Boom + 5.4m Jib (Standard hook for 4.0 ton - Hook mass 60kg)						
Outriggers fully extended (6.0m) - 360° full range						
Boom Angle (°)	Offset 5°		Offset 25°		Offset 45°	
	Working Radius (m)	Load (t)	Working Radius (m)	Load (t)	Working Radius (m)	Load (t)
81	5.2	3	7	2.5	8.3	1.55
77.7	7.2	3	8.9	2.5	10	1.55
75	8.9	3	10.4	2.3	11.4	1.5
73	10	3	11.5	2.14	12.4	1.46
70	11.7	2.6	13.1	1.94	13.9	1.42
65	14.3	2.15	15.7	1.69	16.3	1.35
60	16.8	1.83	18.1	1.49	18.7	1.3
55	19.2	1.55	20.3	1.35	20.8	1.25
54	19.6	1.45	20.7	1.32	21.2	1.22
52	20.4	1.29	21.5	1.19	22	1.18
50	21.2	1.14	22.3	1.05	22.7	1.08
48	22	1.01	23	0.94	23.3	0.99
45	23.2	0.82	24.1	0.77		
40	25	0.58	25.8	0.54		
35	26.6	0.4	27.2	0.38		
Critical Boom Angle	33°		33°		46°	

28.0m Boom + 5.4m Jib (Standard hook for 4.0 ton - Hook mass 60kg)						
Outriggers fully extended (4.5m) - 360° full range						
Boom Angle (°)	Offset 5°		Offset 25°		Offset 45°	
	Working Radius (m)	Load (t)	Working Radius (m)	Load (t)	Working Radius (m)	Load (t)
81	5.2	3	7	2.5	8.3	1.55
77.7	7.2	3	8.9	2.5	10	1.55
75	8.9	3	10.4	2.3	11.4	1.5
73	10	3	11.5	2.14	12.4	1.46
70	11.7	2.6	13.1	1.94	13.9	1.42
69	12.2	2.5	13.6	1.88	14.4	1.4
67	13.2	2.14	14.7	1.77	15.3	1.37
64	14.7	1.63	16	1.46	16.8	1.33
60	16.6	1.14	17.9	1.02	18.5	1
55	18.9	0.7	19.9	0.67	20.7	0.6
50	21	0.39	21.9	0.37		
Critical Boom Angle	48°		48°		53°	

28.0m Boom + 8.2mm Jib (Standard hook for 4.0 ton - Hook mass 60kg)						
Outriggers fully extended (6.0m) - 360° full range						
Boom Angle (°)	Offset 5°		Offset 25°		Offset 45°	
	Working Radius (m)	Load (t)	Working Radius (m)	Load (t)	Working Radius (m)	Load (t)
81	6	2	8.7	1.2	10.5	0.8
77.7	8.7	2	11.1	1.2	12.7	0.8
75	10	2	12.2	1.2	13.7	0.78
72	11.9	1.81	14	1.2	15.3	0.75
70	13	1.71	15.1	1.18	16.4	0.74
65	15.9	1.49	17.8	1.12	18.9	0.72
60	18.6	1.33	20.3	1.05	21.3	0.69
55	21.2	1.2	22.7	0.98	23.5	0.67
53	22.1	1.14	23.6	0.95	24.3	0.66
50	23.5	0.96	24.9	0.77	25.4	0.65
47	24.7	0.8	26.1	0.63	26.5	0.64
45	25.6	0.69	26.8	0.56		
40	27.5	0.49	28.5	0.39		
35	29.1	0.33				
Critical Boom Angle	33°		38°		45°	

28.0m Boom + 8.2mm Jib (Standard hook for 4.0 ton - Hook mass 60kg)						
Outriggers fully extended (4.5m) - 360° full range						
Boom Angle (°)	Offset 5°		Offset 25°		Offset 45°	
	Working Radius (m)	Load (t)	Working Radius (m)	Load (t)	Working Radius (m)	Load (t)
81	6	2	8.7	1.2	10.5	0.8
77.7	8.7	2	11.1	1.2	12.7	0.8
75	10	2	12.2	1.2	13.7	0.78
72	11.9	1.81	14	1.2	15.3	0.75
70	13	1.71	15.1	1.18	16.4	0.74
65	15.9	1.49	17.8	1.12	18.9	0.72
63	16.9	1.26	18.8	1.09	19.8	0.7
60	18.4	0.98	20.2	0.87	21.3	0.69
58	19.4	0.81	21.2	0.72	22.2	0.68
55	20.8	0.6	22.5	0.54	23.3	0.53
50	23.1	0.31				
Critical Boom Angle	48°		53°		53°	

The charts that have been included have been reproduced from manufacturer specifications, and while every effort has been made to ensure their accuracy, we do not accept any responsibility for errors or omissions. We also need to draw your attention to the guidance notes on page 47 to assist you with your crane selection.

CL8

**Free on Wheels Duties**

Stationary on rubber (without outriggers)						
Working Radius (m)	6.7m Boom		11m Boom		15.2m Boom	
	Over Front	360° Full Range	Over Front	360° Full Range	Over Front	360° Full Range
3		6		5.5		5.2
3.5	8.5	4.5	8.5	4.1	8	3.8
4	8.5	3.3	8.5	3.2	8	3
4.5	7.5	2.55	7.2	2.55	6.5	2.4
5			6.1	2	5.4	1.9
5.5			5.1	1.55	4.55	1.5
6			4.25	1.2	3.85	1.15
6.5			3.55	0.9	3.3	0.85
7			3	0.65	2.8	
8			2.15		2.05	
9			1.55		1.5	
10					1	
11					0.6	
Standard Hook	for 22 ton					
Hook Mass	200kg					
Parts of Line	6		4			
Critical Boom Angle	--	--	--	30°	33°	57°

**Pick & Carry Duties**

Pick & Carry (less than 2km/h) (without outriggers)						
Working Radius (m)	6.7m Boom		11m Boom		15.2m Boom	
	Over Front	360° Full Range	Over Front	360° Full Range	Over Front	360° Full Range
3		4.8		4.4		4
3.5	6.8	3.6	6.4	3.3	5.9	3
4	6.8	2.65	6.4	2.55	5.9	2.4
4.5	6	2.05	5.5	2.05	5	1.9
5			4.75	1.5	4.3	1.4
5.5			4.1	1.05	3.65	1
6			3.4	0.65	3.1	0.6
6.5			2.85		2.65	
7			2.4		2.25	
8			1.65		1.6	
9			1		1	
10					0.5	
11						
Standard Hook	for 22 ton					
Hook Mass	200kg					
Parts of Line	6		4			
Critical Boom Angle	--	--	--	42°	35°	60°

The charts that have been included have been reproduced from manufacturer specifications, and while every effort has been made to ensure their accuracy, we do not accept any responsibility for errors or omissions. We also need to draw your attention to the guidance notes on page 47 to assist you with your crane selection.

