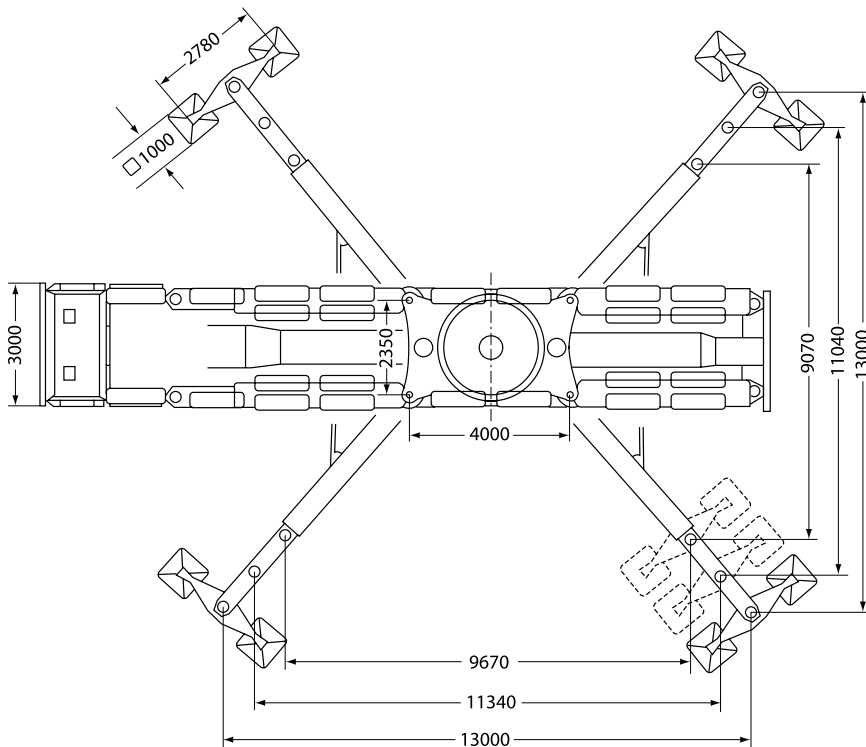
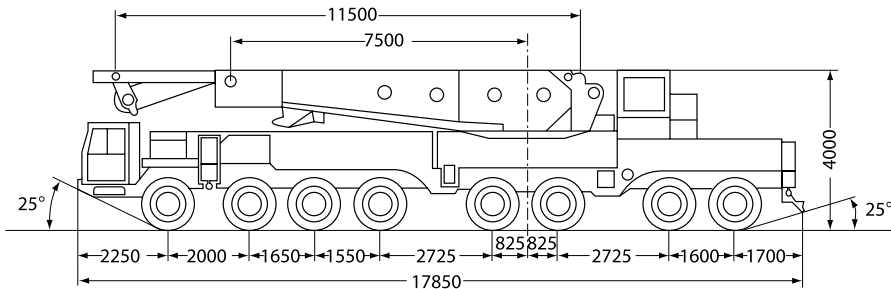


Liebherr LTM 11000 DS

Dimensions



Hookblock

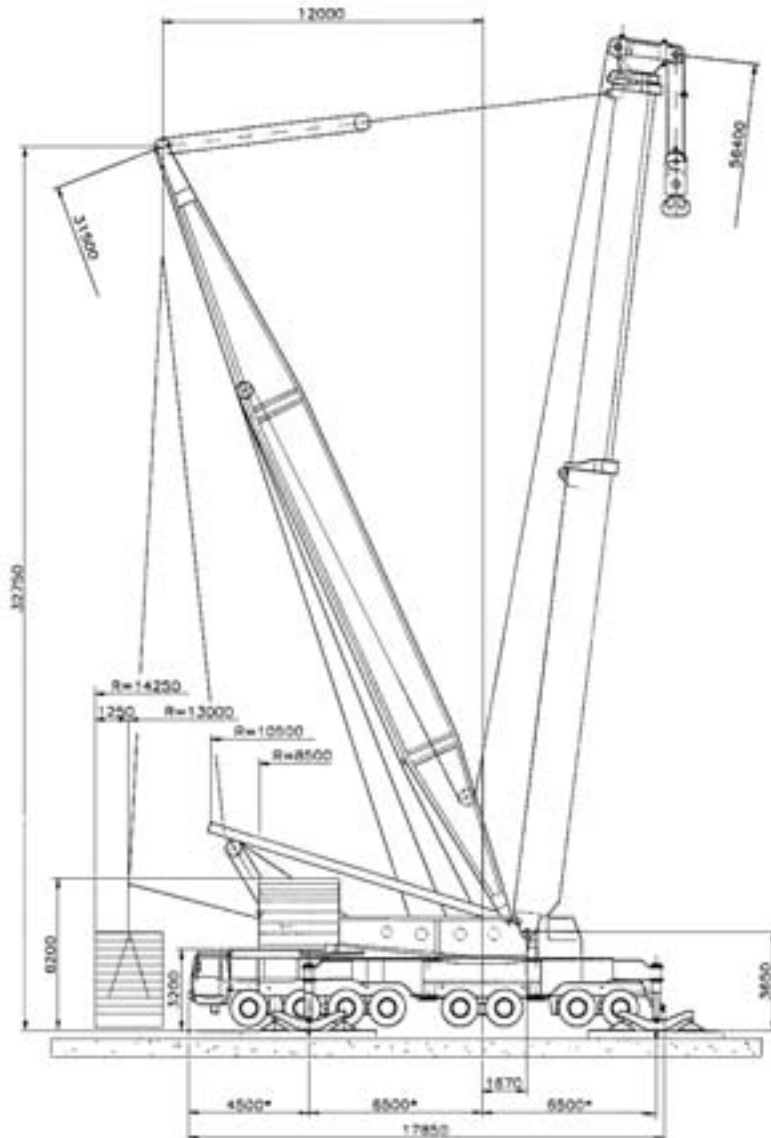
Capacity (t)	350	235	93	41	14.3
Weight (t)	5	4	2	1.2	0.6

The charts that have been included have been reproduced from manufacturer specifications, and while every effort has been made to ensure their accuracy, we do not accept any responsibility for errors or omissions. We also need to draw your attention to the guidance notes on page 47 to assist you with your crane selection.

1000
Tonne
Heavy Cranes

Liebherr LTM 11000 DS

Dimensions



1000
Tonne

Heavy Cranes

The charts that have been included have been reproduced from manufacturer specifications, and while every effort has been made to ensure their accuracy, we do not accept any responsibility for errors or omissions. We also need to draw your attention to the guidance notes on page 47 to assist you with your crane selection.

TD Boom / Derrick Combination

13m x 13m Outrigger Spread												
160t Counterweight												
Boom Length (m)	26		31.6		38.4		44		50.7		56.4	
Radius (m)	*	**	*	**	*	**	*	**	*	**	*	**
8	307	300										
9	272	275	271	218								
10	243	246	243	215	242	197						
12	200	203	199	204	198	192	200	149				
14	168	171	167	172	167	173	169	147	157	157	134	136
16	143	147	142	148	143	150	144	143	139	145	120	136
18	124	128	123	129	124	131	125	129	125	127	108	127
20	109	112	108	113	109	116	110	117	112	111	98	112
22	96	99	95	101	96	103	97	105	100	99	90	100
24	85	89	84	90	85	93	87	94	89	88	83	89
26			75	81	76	84	78	85	80	79	76	80
28			67	73	69	76	70	78	73	72	71	73
30					62	69	63	71	66	65	66	66
32					56	63	57	65	60	59	61	60
34					51	58	52	60	55	54	56	55
36							47.5	55	50	49.5	51	51
38							43.5	51	46	45.5	47.5	46.5
40							40	47.5	42.5	41.5	43.5	43
42									39	38.5	40.5	39.5
44									36	35.5	37.5	36.5
46									33.5	32.5	34.5	34
48											32	31
50											29.7	28.9
Telescope												
I	50	0	92	0	92	0	92	0	92	92	92	92
II	0	50	0	92	50	92	92	92	92	92	92	92
III	0	0	0	0	0	50	0	92	50	50	92	92

* Denotes Suspension Point 1

** Denotes Suspension Point 2

For reduced counterweight duties contact Ainscough Heavy Crane Division

Liebherr LTM 11000 DS

Lifting Capacities with Main Boom and Derrick Counterweight

Main Boom 26m										
Derrick Counterweight Radius (m)	0t		50t		100t		150t		200t	
	A	B	A	B	A	B	A	B	A	B
8	307 *	288 **	350 *	336 *						
9	275 *	263 **	298 *	298 *	348 *	320 *				
10	246 *	235 **	287 **	287 *	331 *	305 *				
12	203 *	194 **	225 **	225 **	269 *	269 *	302 *	278 *		
14	171 *	163 **	183 **	183 **	240 **	240 **	276 *	255 *	278 *	255 *
16	147 *	140 **	152 **	152 **	202 **	202 **	251 **	232 *	257 *	236 *
18	128 *	122 **	129 **	129 **	173 **	173 **	216 **	212 **	238 *	219 *
20	112 *	107 **	111 **	111 **	150 **	150 **	189 **	189 **	218 *	204 *
22	99 *	95 **	97 **	97 **	132 **	132 **	167 **	167 **	192 **	185 *
24	89 *	85 **	85 **	85 **	117 **	117 **	149 **	149 **	162 **	162 **

For reduced counterweight duties contact Ainscough Heavy Crane Division

Main Boom 31.8m										
Derrick Counterweight Radius (m)	0t		50t		100t		150t		200t	
	A	B	A	B	A	B	A	B	A	B
9	271 *	259 *	293 *	293 *						
10	243 **	232 *	284 *	284 *	288 *	288 *				
12	204 **	195 **	221 *	221 *	278 *	264 *				
14	172 **	164 **	185 **	185 **	236 *	236 *	267 *	242 *		
16	148 **	141 **	154 **	154 **	198 *	198 *	246 *	223 *		
18	129 **	123 **	131 **	131 **	175 **	175 **	212 *	212 *	228 *	207 *
20	113 **	108 **	119 **	113 **	152 **	152 **	194 *	184 *	212 *	192 *
22	101 **	96 **	99 **	99 **	134 **	134 **	169 **	169 **	198 *	185 **
24	90 **	86 **	87 **	87 **	119 **	119 **	151 **	151 **	180 **	173 **
26	81 **	77 **	77 **	77 **	106 **	106 **	136 **	136 **	165 **	163 **
28	73 **	70 **	69 **	69 **	96 **	96 **	123 **	123 **	150 **	150 **

For reduced counterweight duties contact Ainscough Heavy Crane Division

Main Boom 38.4m										
Derrick Counterweight Radius (m)	0t		50t		100t		150t		200t	
	A	B	A	B	A	B	A	B	A	B
10	242 *	231 *	243 *	243 *						
12	198 *	192 **	223 *	223 *	239 *	239 *				
14	173 **	166 **	181 *	181 *	235 *	235 *				
16	150 **	143 **	158 **	158 **	200 *	200 *	228 *	224 *		
18	131 **	125 **	135 **	135 **	171 *	171 *	209 *	208 *		
20	116 **	110 **	117 **	117 **	156 **	156 **	187 *	187 *	193 *	193 *
22	103 **	98 **	103 **	103 **	138 **	138 **	165 *	165 *	181 *	180 *
24	93 **	88 **	91 **	91 **	123 **	123 **	147 *	147 *	170 *	169 *
26	84 **	80 **	81 **	81 **	110 **	110 **	131 *	131 *	161 *	159 *
28	76 **	72 **	73 **	73 **	100 **	100 **	127 **	127 **	146 *	146 *
30	69 **	66 **	66 **	66 **	91 **	91 **	116 **	116 **	133 *	133 *
32	63 **	60 **	59 **	59 **	83 **	83 **	106 **	106 **	122 *	122 *
34	58 **	55 **	54 **	54 **	76 **	76 **	98 **	98 **	112 *	112 *

* Denotes Suspension Point 1

** Denotes Suspension Point 2

'A' Denotes 13m x 13m on Outrigger

'B' Denotes 11.3m x 11m on Outrigger

For reduced counterweight duties contact Ainscough Heavy Crane Division



1000
Tonne

Heavy Cranes

The charts that have been included have been reproduced from manufacturer specifications, and while every effort has been made to ensure their accuracy, we do not accept any responsibility for errors or omissions. We also need to draw your attention to the guidance notes on page 47 to assist you with your crane selection.

Liebherr LTM 11000 D

Lifting Capacities with Main Boom and Derrick Counterweight

Derrick Counterweight	Main Boom 44m									
	0t		50t		100t		150t		200t	
	A	B	A	B	A	B	A	B	A	B
12	200 *	191 **	206 *	206 *						
14	169 *	161 **	182 *	182 *	202 *	202 *				
16	144 *	143 **	152 *	152 *	180 *	180 *				
18	129 **	127 **	129 *	129 *	161 *	161 *				
20	117 **	112 **	111 *	111 *	146 *	146 *				
22	105 **	100 **	105 **	105 **	131 *	131 *	134 *	134 *	134 *	134 *
24	94 **	90 **	93 **	93 **	116 *	116 *	124 *	124 *	124 *	124 *
26	85 **	81 **	83 **	83 **	104 *	104 *	116 *	116 *	116 *	116 *
28	78 **	74 **	75 **	75 **	93 *	93 *	109 *	109 *	109 *	109 *
30	71 **	68 **	68 **	68 **	84 *	84 *	104 *	104 *	104 *	104 *
32	65 **	62 **	61 **	61 **	76 *	76 *	99 *	99 *	99 *	99 *
34	60 **	57 **	56 **	56 **	69 *	69 *	91 *	91 *	94 *	94 *
36	55 **	52 **	51 **	51 **	63 *	63 *	84 *	84 *	90 *	90 *
38	51 **	48.5 **	47 **	47 **	62 *	62 *	77 *	77 *	85 *	85 *
40	47.5 **	44.5 **	43 **	43 **	62 **	62 **	72 *	72 *	79 *	79 *

For reduced counterweight duties contact Ainscough Heavy Crane Division

Derrick Counterweight	Main Boom 50.7m									
	0t		50t		100t		150t		200t	
	A	B	A	B	A	B	A	B	A	B
14	157 **	157 *								
16	145 **	139 *	153 **	153 **						
18	127 **	122 *	146 **	146 **	150 **	150 **				
20	112 *	107 *	126 **	126 **	146 **	146 **				
22	100 *	95 *	110 **	110 **	143 **	143 **				
24	89 *	85 *	97 **	97 **	130 **	130 **	139 **	139 **		
26	80 *	76 *	87 **	87 **	116 **	116 **	135 **	135 **		
28	73 *	69 *	78 **	78 **	105 **	105 **	132 **	132 **		
30	66 *	62 *	70 *	70 *	95 **	95 **	120 **	120 **	129 **	129 **
32	60 *	57 *	63 *	63 *	86 **	86 **	110 **	110 **	126 **	126 **
34	55 *	52 *	58 *	58 *	79 **	79 **	101 **	101 **	123 **	122 **
36	50 *	47.5 *	52 *	52 *	72 **	72 **	93 **	93 **	114 **	114 **
38	46 *	43.5 *	48 *	48 *	67 **	67 **	86 **	86 **	106 **	106 **
40	42.5 *	40 *	44 *	44 *	61 **	61 **	80 **	80 **	99 **	99 **
42	39 *	36.5 *	40 *	40 *	57 **	57 **	74 **	74 **	92 **	92 **
44	36 *	34 *	37 *	37 *	53 **	53 **	69 **	69 **	86 **	86 **
46	33.5 *	31 *	34 *	34 *	50 *	50 *	65 **	65 **	81 **	81 **

* Denotes Suspension Point 1

'A' Denotes 13m x 13m on Outrigger

** Denotes Suspension Point 2

'B' Denotes 11.3m x 11m on Outrigger

For reduced counterweight duties contact Ainscough Heavy Crane Division

The charts that have been included have been reproduced from manufacturer specifications, and while every effort has been made to ensure their accuracy, we do not accept any responsibility for errors or omissions. We also need to draw your attention to the guidance notes on page 47 to assist you with your crane selection.

Liebherr LTM 11000 DS

Lifting Capacities with Main Boom and Derrick Counterweight

Main Boom 56.4m										
Derrick Counterweight Radius (m)	0t		50t		100t		150t		200t	
	A	B	A	B	A	B	A	B	A	B
14	136 **	136 **								
16	136 **	136 **								
18	127 **	121 **	136 **	136 **						
20	112 **	107 **	128 **	128 **	132 **	132 **				
22	100 **	95 **	112 **	112 **	124 **	124 **				
24	89 **	85 **	99 **	99 **	116 **	116 **				
26	80 **	77 **	88 **	88 **	109 **	109 **				
28	73 **	70 *	79 **	79 **	102 **	102 **				
30	66 **	64 *	71 **	71 **	96 **	96 **				
32	61 *	58 *	65 **	65 **	88 **	88 **	91 **	91 **		
34	56 *	53 *	59 **	59 **	81 **	81 **	86 **	86 **		
36	51 *	48.5 *	54 *	54 *	74 **	74 **	82 **	82 **		
38	47.5 *	44.5 *	49 *	49 *	68 **	68 **	78 **	78 **		
40	43.5 *	41 *	45 *	45 *	63 **	63 **	75 **	75 **		
42	40.5 *	38 *	42 *	42 *	59 **	59 **	72 **	72 **		
44	37.5 *	35 *	38 *	38 *	54 **	54 **	69 **	69 **		
46	34.5 *	32.5 *	35 *	35 *	50 **	50 **	66 **	66 **		
48	32 *	29.7 *	32 *	32 *	47 **	47 **	62 **	62 **	64 **	64 **
50	29.7 *	27.2 *	30 *	30 *	44 **	44 **	59 **	59 **	62 **	62 **

* Denotes Suspension Point 1

'A' Denotes 13m x 13m on Outrigger

** Denotes Suspension Point 2

'B' Denotes 11.3m x 11m on Outrigger

For reduced counterweight duties contact Ainscough Heavy Crane Division

1000
Tonne

Heavy Cranes

Liebherr LTM 11000 DS

Lifting Capacities Main Boom 83° - Derrick Luffing Fly Jib (TDN)

Derrick Mast 31.5m - Suspension Point 1 - Luffing Fly Jib																							
Telescopic Boom and adapter (m)	42										47.6												
	Fly Jib (m)	21	28	35	42	49	56	63	70	77	84	91	21	28	35	42	49	56	63	70	77	84	91
Radius (m)																							
17	107																						
18	107												97										
20	107	87											97	77									
22	103	83	75										93	75	65								
24	94	80	73	63									88	73	65								
26	84	77	71	62	51								83	7	63	54							
28	78	74	69	60	51	42							76	68	62	53	44.5						
30		70	67	59	51	42	34						66	66	60	53	44.5	36.5					
32		64	63	58	50	42	33.5	29						64	59	52	44.5	36.5	30.5				
34		59	58	55	49.5	42	33	28.4	24					60	58	51	44.5	36.5	29.9	25.4			
36			54	52	47.5	42	32.5	27.8	23.6	19.5				54	54	49	44.5	36.5	29.4	24.9	20.8		
38			50	49	45.5	41	32	27.3	23.2	19.5				50	47.5	43	36.5	28.9	24.5	20.6	16.8		
40			46.5	45.5	43.5	39.5	31	26.8	22.7	19.1	16			47	45.5	41.5	36.5	28.5	24.1	20.2	16.8	13.6	
42			43.5	42.5	41	38.5	30.5	26.3	22.3	18.7	16			44	42.5	39.5	36	28	23.7	19.9	16.7	13.6	
44				39.5	38.5	37.5	30	25.8	21.9	18.4	15.8				40	38	35	27.6	23.3	19.6	16.4	13.6	
46				37	36.5	36.5	29.4	25.4	21.5	18	15.5				37.5	36.5	34	27.3	22.9	19.2	16.1	13.6	
48				34.5	34	33.5	28.6	25	21.1	17.7	15.1				35	34.5	33	26.9	22.6	18.9	15.9	13.5	
50					32	31.5	27.7	24.4	20.7	17.4	14.8				33	32.5	31.5	26.6	22.2	18.6	15.6	13.3	
52					30	29.6	26.9	23.8	20.4	17	14.5					30.5	29.9	25.9	21.8	18.3	15.3	13	
54					28.3	27.9	26.1	23.2	20.1	16.7	14.3					28.7	28.3	25.3	21.4	18.1	15.1	12.8	
56					26.4	26.3	25.3	22.6	19.8	16.5	14					27	26.7	24.6	21	17.8	14.8	12.5	
58					24.7	23.9	22	19.3	16.2	13.8							25.2	23.9	20.6	17.6	14.6	12.3	
60					23.2	22.5	21.3	18.8	16	13.5							23.8	23.2	20.1	17.3	14.4	12.1	
62					21.8	21.3	20.7	18.3	15.7	13.3							22.4	21.9	19.7	17	14.2	11.9	
64						20	19.6	17.8	15.3	13.1								20.7	19.3	16.6	14	11.7	
66						18.8	18.5	17.2	14.9	12.8								19.5	18.9	16.3	13.8	11.5	
68						17.6	17.5	16.5	14.5	12.5								18.4	17.8	15.9	13.5	11.4	
70							16.4	15.8	14	12.1								17.3	16.8	15.6	13.1	11.2	
72							15.5	14.9	13.6	11.8									15.9	15.3	12.7	11.1	
74							14.5	14	13.2	11.5									15	14.4	12.3	10.9	
76							13.6	13.2	12.3	11.1									14.1	13.6	12	10.6	
78								12.3	11.4	10.8										12.8	11.6	10.2	
80								11.5	10.5	10.4										11.9	11.2	9.9	
82								10.6	9.8	9.7										11.1	10.5	9.5	
84									9.1	9											9.7	9.2	
86									8.4	8.4											9	8.8	
88									7.8	7.7											8.3	8.2	
90									7.1	7.1											7.6	7.6	
92										6.5												7	
94										5.9												6.4	
96										5.4												5.8	

For reduced counterweight duties contact Ainscough Heavy Crane Division

The charts that have been included have been reproduced from manufacturer specifications, and while every effort has been made to ensure their accuracy, we do not accept any responsibility for errors or omissions. We also need to draw your attention to the guidance notes on page 47 to assist you with your crane selection.

Liebherr LTM 11000 DS

Lifting Capacities Main Boom 83° - Derrick Luffing Fly Jib (TDN)

Derrick Mast 31.5m - Suspension Point 2 - Luffing Fly Jib																								
Telescopic Boom and adapter (m)	54.3										60													
	Fly Jib (m)	21	28	35	42	49	56	63	70	77	84	91	21	28	35	42	49	56	63	70	77	84	91	
Radius (m)	20	75										61												
22	71	61										61	50											
24	66	61	50									61	50	41.5										
26	60	59	50	42								59	50	41.5	34.5									
28	51	56	50	42	34.5							53	50	41.5	34.5	28.5								
30	46	53	49	41.5	34.5	29						46.5	49	41.5	34.5	28.5								
32		46.5	48	41.5	34.5	29	24.5					47	41.5	34	28.4	24								
34		40.5	45.5	41	34.5	29	24.5	20.2				42.5	40.5	34	28.3	23.9	20							
36			37.5	42.5	41	34	28.9	24.5	20.2	16.5			38	39.5	34	28.1	23.8	19.9	16					
38				38	40	34	28.7	24.4	20.2	16.5	13.5		34	38	33.5	28	23.6	19.8	16	13.5				
40				34	37	34	28.6	24.2	20.2	16.5	13.5	10.5		35	33	27.9	23.6	19.7	16	13.5	10.5			
42				31	33.5	33.5	28.4	23.9	19.9	16.4	13.4	10.5		32	32	27.8	23.5	19.6	16	13.4	10.5	8		
44				30	30	33	28.3	23.6	19.6	16.3	13.4	10.5		28.8	31	27.5	23.4	19.5	15.9	13.3	10.5	8		
46					26.6	31	28.2	23.3	19.4	16.2	13.4	10.5			28.2	27	23.3	19.4	15.8	13.2	10.4	8		
48					23.9	28.2	28.1	23	19.2	15.9	13.4	10.5			25.3	26.4	23.2	19.3	15.8	13.2	10.4	7.9		
50					23.2	25.4	27.7	22.7	18.9	15.7	13.3	10.5			22.5	25.8	22.8	19.3	15.7	13.1	10.3	7.8		
52						22.7	25.6	22.5	18.7	15.5	13.2	10.4				23.8	22.5	19.2	15.6	13	10.2	7.7		
54						20.1	23.4	22.3	18.5	15.3	13	10.4				21.4	22.1	19	15.6	12.9	10.1	7.7		
56						19.1	21.2	22.1	18.3	15.1	12.9	10.3				19.2	21.7	18.7	15.5	12.9	10.1	7.6		
58							19.1	21.8	18.2	14.9	12.7	10.2				17	21.4	18.3	15.4	12.8	10	7.6		
60							17	20.3	18	14.7	12.5	10.1					19.5	17.8	15.3	12.7	9.9	7.5		
62							15.7	18.3	17.9	14.6	12.3	9.9					17.3	17.3	15.2	12.7	9.9	7.4		
64							15.3	16.4	17.6	14.5	12.2	9.8					15.2	16.8	14.8	12.5	9.8	7.4		
66								14.5	16.1	14.4	12	9.6						15.2	14.5	12.4	9.8	7.3		
68								12.7	14.7	14.3	11.9	9.5						13.6	14.1	12.2	9.7	7.3		
70									11.8	13.2	14.1	11.8	9.3						12.1	13.8	12	9.6	7.2	
72										11.7	13.1	11.7	9.2							12.5	11.8	9.5	7.2	
74											10.3	11.9	11.6	9.1						11.2	11.6	9.4	7.1	
76												9.1	10.6	11.5	9						9.9	11.4	9.3	7.1
78												8.9	9.4	11.4	8.9						8.7	10.3	9.2	7.1
80													8.2	10.4	8.8							9.3	9.1	7
82													7	9.3	8.5							8.3	9	7
84														6.5	8.2	8.2						7.3	8.6	6.9
86															7.2	7.9							7.7	6.7
88																6.2	7.6						6.8	6.4
90																	5.2	6.7					5.9	6.1
92																							5.1	5.8
94																								5.4
96																								4.6
98																								3.9

For reduced counterweight duties contact Ainscough Heavy Crane Division



1000
Tonne
Heavy Cranes

The charts that have been included have been reproduced from manufacturer specifications, and while every effort has been made to ensure their accuracy, we do not accept any responsibility for errors or omissions. We also need to draw your attention to the guidance notes on page 47 to assist you with your crane selection.

Liebherr LTM 11000 DS

Lifting Capacities Main Boom 60° - Derrick Luffing Fly Jib (TDN)

Derrick Mast 31.5m - Suspension Point 1 - Luffing Fly Jib																					
Telescopic Boom and adapter (m)	42										47.6										
	21	28	35	42	49	56	63	70	77	84	91	21	28	35	42	49	56	63	70	77	84
Fly Jib (m)																					
Radius (m)																					
40	40.5																				
42	38.5																				
44	36.5	35.5									33.5										
46		33.5									31.5										
48		32									30	29.2									
50		30.5	29.5								27.8										
52		29.1	28.1								26.5	25.5									
54			26.8	25.7							25.3	24.3									
56			25.6	24.5								23.2	22.1								
58			24.6	23.4	22.5							22.2	21.1								
60			22.4	21.5								21.3	20.2								
62			21.5	20.5	19.4							20.4	19.3	18							
64			20.6	19.6	18.5								18.4	17.2							
66			19.8	18.8	17.7								17.7	16.4	15.6						
68				18	16.9	16							17	15.7	14.9						
70				17.3	16.2	15.3							15	14.2	12.8						
72				16.6	15.5	14.6	13.3							14.4	13.5	12.2					
74					14.9	13.9	12.7							13.8	12.9	11.5	10.6				
76					14.3	13.3	12	11.1						13.3	12.3	11	10				
78					13.8	12.7	11.4	10.5							11.8	10.4	9.4				
80					13.1	12.1	10.9	9.9							11.3	9.9	8.8	7.3			
82					11.6	10.3	9.4	8.1							10.8	9.4	8.3	6.7			
84					11.1	9.8	8.8	7.5								8.9	7.8	6.4	5.5		
86					10.7	9.3	8.3	6.9	6							8.5	7.3	6.1	5.2		
88						8.9	7.8	6.5	5.7							8.1	6.8	5.8	4.9	4.4	
90						8.5	7.4	6.2	5.4							7.7	6.5	5.5	4.6	4.1	
92						8.1	6.9	5.9	5.1								6.3	5.3	4.4	3.9	
94						7.7	6.6	5.7	4.8								6	5	4.1	3.6	
96							6.3	5.4	4.6								5.8	4.8	3.9	3.4	
98							6.1	5.2	4.3									4.6	3.7	3.2	
100								5.9	4.9	4.1								4.4	3.5	2.9	
102									4.7	3.9									4.2	3.3	2.7
104									4.5	3.7									4.1	3.1	2.6
106									4.4	3.5										2.9	2.4
108									3.9	3.3										2.8	2.2
110										3.1										2.7	2
112										3											
114										2.7											

For reduced counterweight duties contact Ainscough Heavy Crane Division

The charts that have been included have been reproduced from manufacturer specifications, and while every effort has been made to ensure their accuracy, we do not accept any responsibility for errors or omissions. We also need to draw your attention to the guidance notes on page 47 to assist you with your crane selection.

Liebherr LTM 11000 DS

Lifting Capacities Main Boom 60° - Derrick Luffing Fly Jib (TDN)

Derrick Mast 31.5m - Suspension Point 2 - Luffing Fly Jib																			
Telescopic Boom and adapter (m)	54.3											60							
	Fly Jib (m)	21	28	35	42	49	56	63	70	77	84	21	28	35	42	49	56	63	70
Radius (m)																			
46	29.9																		
48	28.4																		
50	27.1	25.9										25.2							
52		24.7										24							
54		23.5										22.9	21.8						
56		22.5	21.5									20.8							
58		21.5	20.6									19.8	18.6						
60			19.6	18.3								19	17.8						
62			18.8	17.4									16.9						
64			18	16.6	15.7								16.2	15.1					
66				15.9	14.9								15.5	14.4					
68				15.2	14.2								14.9	13.7	12.3				
70				14.6	13.5	12.4								13.1	11.7				
72				14	12.9	11.7								12.5	11.1	10.2			
74					12.3	11.1	10.1							12	10.5	9.6			
76					11.8	10.6	9.5								10	9	7.3		
78					11.3	10	8.9	7.3							9.5	8.5	6.7		
80						9.5	8.4	6.7							9	8	6.4		
82						9.1	7.8	6.4							8.6	7.5	6.1	5	
84						8.7	7.4	6.1	5.1							7	5.8	4.8	
86						8.3	6.9	5.8	4.8							6.7	5.6	4.5	3.9
88							6.6	5.5	4.5	4						6.5	5.3	4.3	3.6
90							6.3	5.3	4.3	3.7							5.1	4.1	3.4
92							6.1	5.1	4	3.5							4.9	3.8	3.2
94								4.8	3.8	3.3							4.7	3.6	3
96								4.6	3.6	3							4.6	3.5	2.8
98								4.5	3.4	2.8								3.3	2.6
100								4.3	3.2	2.6								3.1	2.4
102									3.1	2.5								3	2.2
104									2.9	2.3									2.1
106									2.8	2.1									
108										2									

For reduced counterweight duties contact Ainscough Heavy Crane Division



1000
Tonne
Heavy Cranes

Liebherr LTM 11000 DS

Lifting Capacities Main Boom 68° - Luffing Fly Jib and Derrick Counterweight

160t Counterweight - 140t Derrick Counterweight																							
Telescopic Boom and adapter (m)	42 *1)										47.6 *1)												
	Fly Jib (m)	21	28	35	42	49	56	63	70	77	84	91	21	28	35	42	49	56	63	70	77	84	91
Radius (m)	21	28	35	42	49	56	63	70	77	84	91	21	28	35	42	49	56	63	70	77	84	91	
32	70																						
34	63											65											
36	57	61										62											
38	51	55										58	55										
40	46.5	49.5	53									52	53										
42		45	48									47	50	47.5									
44		41	43.5	46.5								46	45.5										
46		37	40	42.5								42	43.5	40.5									
48			36.5	38.5	40.5							38	41	39									
50			33.5	35.5	37.5								37.5	37.5	35								
52			30.5	32.5	34.5	35.5							34.5	36	33.5								
54			27.7	29.8	32	34							31.5	34.5	32.5	30							
56				27.4	29.2	32	28.2						28.8	31.5	31.5	29							
58				25.3	26.7	29.6	27.8							28.6	30.5	28	25.2						
60				23.2	24.2	27.2	27.5	23						26.4	28.7	27.1	24.9						
62					22.7	24.8	26.3	22.8						24.2	25.8	26.3	24.3	20.5					
64					20.9	22.5	24.2	22.5	18.7						23.9	25.6	23.5	20.3					
66					19.3	20.4	22.3	22.2	18.5	15					22.1	24.6	22.8	20.1	16.6				
68					17.7	19	20.4	22	18.3	15					20.3	22.2	22.2	19.9	16.5				
70						17.5	18.5	20.9	18	14.9	12.5				18.5	19.9	21.6	19.6	16.3	13.7			
72						16.2	16.8	19	17.8	14.7	12.3					18.4	20.5	19	16.1	13.6	10.8		
74						14.8	15.6	17.2	17.7	14.3	12.1					16.9	18.1	18.5	15.9	13.4	10.8		
76							14.4	15.4	17.2	14.3	11.9					15.5	16.6	17.9	15.8	13.3	10.7		
78							13.3	13.8	15.7	14.1	11.7						15.3	16.6	15.7	13.1	10.6		
80							12.1	12.7	14.1	14	11.6						14	15	15.3	13	10.4		
82								11	11.7	12.5	13.3	11.4						12.8	13.7	14.9	12.9	10.3	
84									10.7	11.1	11.9	11.3						11.6	12.6	13.9	12.8	10.1	
86									8.9	10.2	10.7	11.1							11.5	12.3	12.6	10	
88									8.8	9.3	9.6	10.9							10.5	11.2	12.3	9.9	
90										8.5	8.5	9.7							9.4	10.2	11.3	9.8	
92											7.7	7.7	8.6							9.3	10.3	9.7	
94												6.9	7	7.6						8.4	9.2	9.6	
96													6.1	6.2	6.6						7.5	8.2	9.2
98														5.6	6						6.6	7.1	8
100															5	5.4						6.4	6.8
102																4.5	4.8					5.8	6.2
104																	4.3					5.1	5.5
106																		3.8					4.9
108																			3.3				4.3
110																				2.7			3.7
112																							3.1
Telescope																							
I	92										92												
II	50										92												
III	0										0												

* Denotes Suspension Point 1

For reduced counterweight duties contact Ainscough Heavy Crane Division

The charts that have been included have been reproduced from manufacturer specifications, and while every effort has been made to ensure their accuracy, we do not accept any responsibility for errors or omissions. We also need to draw your attention to the guidance notes on page 47 to assist you with your crane selection.

Liebherr LTM 11000 DS

Lifting Capacities Main Boom 68° - Luffing Fly Jib and Derrick Counterweight

160t Counterweight - 140t Derrick Counterweight																							
Telescopic Boom and adapter (m)	54.3 * ¹⁾										60 * ¹⁾												
	Fly Jib (m)	21	28	35	42	49	56	63	70	77	84	91	21	28	35	42	49	56	63	70	77	84	91
Radius (m)																							
38	63																						
40	60												43.5										
42	54	53											41.5										
44	49	51	44.5										39.5	37									
46		48.5	44.5										38.5	35.5									
48		44.5	43.5	37									34	31.5									
50		40.5	42	37									32.5	30									
52			40.5	37	30								32	28.9	26.5								
54			36.5	37	30									27.8	25.6								
56			33.5	35.5	30	25								26.9	24.8	22.3							
58			30.5	33.5	30	25								26.4	23.9	21.7	18.8						
60				30.5	30	25	21							26.1	23.1	21	18.8						
62				28.1	30	25	21								22.4	20.3	18.3	16					
64				25.8	28.3	25	21	17							22	19.7	17.7	15.6					
66					25.8	25	20.8	17							21.6	19.1	17.2	15.1	13.4				
68					23.5	25	20.7	16.9	14							18.6	16.7	14.6	13				
70					21.6	24	20.6	16.8	14							18.2	16.2	14.2	12.6	10.8			
72					19.8	21.9	20.4	16.7	14	10.9						17.9	15.7	13.8	12.3	10.5			
74						20	20.4	16.6	13.9	10.9						17.9	15.4	13.4	11.9	10.2	8.2		
76						18.4	19.8	16.5	13.8	10.8	8.1						15	13	11.6	9.9	8.1		
78						16.9	18.3	16.4	13.7	10.8	8.1						14.7	12.7	11.2	9.6	7.8	5.9	
80							16.7	16.4	13.5	10.8	8.1						14.7	12.3	10.9	9.3	7.6	5.9	
82								15.2	16.4	13.5	10.7	8.1							12.3	10.6	9	7.3	5.9
84								14	15.3	13.4	10.7	8							12.3	10.3	8.7	7.1	5.7
86								12.7	13.9	13.4	10.7	8							12.3	10	8.4	6.8	5.6
88									12.6	13.3	10.7	8							12.2	9.8	8.2	6.6	5.4
90									11.5	13	10.6	8								9.6	7.9	6.4	5.2
92									10.4	11.7	10.5	8								9.5	7.7	6.2	5
94										10.5	10.5	8								9.5	7.6	6	4.9
96										9.5	10.4	7.9									7.4	5.9	4.7
98										8.6	9.4	7.9									7.2	5.7	4.5
100										7.6	8.4	7.9									7.2	5.6	4.4
102											7.4	7.9									7.2	5.5	4.3
104											6.6	7.3										5.4	4.2
106											5.9	6.5										5.4	4.1
108												5.7										5.4	4
110												5											3.9
112												4.4											3.9
114												3.1											3.9
116																							3.1
Telescope																							
I	92										92												
II	92										92												
III	50										92												

* Denotes Suspension Point 1

For reduced counterweight duties contact Ainscough Heavy Crane Division

The charts that have been included have been reproduced from manufacturer specifications, and while every effort has been made to ensure their accuracy, we do not accept any responsibility for errors or omissions. We also need to draw your attention to the guidance notes on page 47 to assist you with your crane selection.

1000
Tonne

Heavy Cranes

