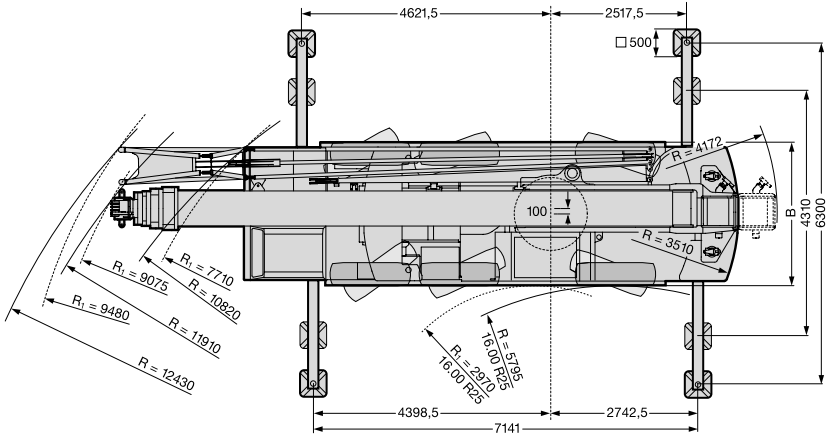
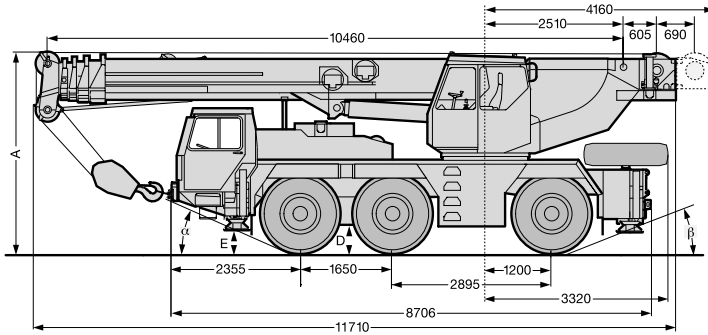


Liebherr LTM 1050-1

Dimensions



R₁ - All Wheel Steering

Tyre Width	Dimensions (mm)						
	A	*A 100mm	B	C	D	α	β
14.00 R25	3620	3520	2500	290	410	23°	19°
16.00 R25	3670	3570	2660	340	460	25°	21°

* lowered

Load Reductions (Fly Jib Stowed)

Boom Length (m)	10.5	17.1	23.8	30.4	37	40
Load to be Deducted (t)	0.22	0.14	0.1	0.1	0.1	0.1

Hookblock

Capacity (t)	50	32	14.5	4.5
Weight (t)	0.45	0.4	0.17	0.11

The charts that have been included have been reproduced from manufacturer specifications, and while every effort has been made to ensure their accuracy, we do not accept any responsibility for errors or omissions. We also need to draw your attention to the guidance notes on page 47 to assist you with your crane selection.

50
Tonne

All Terrain
Cranes

Liebherr LTM 1050-1

Main Boom Duties

9.7t Counterweight										
Radius (m)	10.5m		17.1m		23.8m		30.4m		37m	40m
	*									
3	50	45.5								
3.5	44.5	41								
4	39.5	37.5	31							
4.5	35.5	34	30							
5	32	30.5	28.1					11.7		
6	26.8	25.7	24.5		18.2	14.9	13.6	11.3	9.3	
7	22.8	21.4	20.1	20.1	17.8	13.7	13.2	10.5	9.3	7.6
8			16.6	18.6	16	12.5	12.5	9.7	9.2	7.6
9			13.9	15.9	13.6	11.4	11.8	9	8.7	7.5
10			11.6	13.5	11.7	10.5	11	8.4	8.3	7.2
12			8.3	10	9	9	8.9	7.1	7.4	6.5
14			6.2	7.8	7	7.9	7.1	6.1	6.5	5.9
16					5.4	6.6	5.7	5.3	5.7	5.4
18					4	5.4	4.6	4.7	4.7	4.6
20					3.3	4.5	3.5	4.1	3.6	3.6
22							2.9	3.7	3	3
24							2.3	3.2	2.5	2.5
26							1.9	2.8	2.1	2.1
28									1.7	1.7
30									1.3	1.4
32									1	1.1
34										0.8

* Over rear

50
Tonne

All Terrain
Cranes

Fly Jib Duties

9.7t Counterweight

50
Tonne

All Terrain
Cranes

Main Boom Radius (m)	30.4			33.7			37			40			30.4			37			40		
	9.6			9.6			9.6			9.6			16			16			16		
	0°	15°	30°	0°	15°	30°	0°	15°	30°	0°	15°	30°	0°	15°	30°	0°	15°	30°	0°	15°	30°
7	4.5	4.5		5																	
8	4.5	4.5		5			4														
9	4.5	4.5		4.9	4.6		4														
10	4.5	4.4	4.2	4.9	4.5	4.3	4	3.8													
12	4.5	4.3	4	4.7	4.3	4.1	3.9	3.7	3.5												
14	4.3	4	3.7	4.4	4.2	3.9	3.8	3.6	3.3	3.1	3.1	2.9	2.2	2.1	1.9	2	2				
16	4.1	3.7	3.4	4.2	4	3.6	3.7	3.4	3.1	3.1	3	2.8	2.2	2	1.8	2	1.9	1.7	1.8	1.8	1.6
18	3.8	3.4	3.1	4.1	3.7	3.3	3.6	3.2	2.8	3.1	2.9	2.6	2.1	1.9	1.7	2	1.8	1.6	1.8	1.8	1.6
20	3.5	3.1	2.8	3.8	3.4	3	3.3	2.9	2.6	3	2.7	2.4	2	1.7	1.5	2	1.7	1.5	1.8	1.7	1.5
22	3.2	2.8	2.6	3.2	3.1	2.8	3.1	2.7	2.5	2.8	2.5	2.2	1.8	1.6	1.4	1.9	1.6	1.4	1.8	1.6	1.4
24	2.8	2.6	2.4	2.7	2.8	2.5	2.7	2.5	2.3	2.6	2.3	2	1.7	1.5	1.4	1.8	1.5	1.4	1.7	1.5	1.3
26	2.6	2.3	2.2	2.2	2.4	2.3	2.3	2.4	2.2	2.2	2.1	1.9	1.6	1.4	1.3	1.6	1.4	1.3	1.6	1.4	1.3
28	2.3	2.2	2	1.8	2	2.1	1.9	2	2	1.8	1.9	1.7	1.5	1.3	1.2	1.5	1.4	1.2	1.5	1.3	1.2
30	2.1	2	1.9	1.5	1.6	1.7	1.6	1.7	1.8	1.5	1.6	1.6	1.4	1.2	1.1	1.4	1.3	1.2	1.4	1.3	1.2
32	1.9	1.9	1.8	1.2	1.3	1.4	1.3	1.4	1.5	1.2	1.3	1.4	1.3	1.2	1.1	1.4	1.2	1.1	1.3	1.2	1.1
34	1.7	1.7	1.7	1	1	1.1	1	1.1	1.2	1	1.1	1.1	1.2	1.1	1.1	1.2	1.2	1.1	1.1	1.2	1.1
36	1.4	1.5	1.5	0.7	0.8	0.8	0.8	0.9	0.9	0.7	0.8	0.9	1.1	1.1	1	1	1.1	1.1	0.9	1	1.1
38																					
40																					
42																					

The charts that have been included have been reproduced from manufacturer specifications, and while every effort has been made to ensure their accuracy, we do not accept any responsibility for errors or omissions. We also need to draw your attention to the guidance notes on page 47 to assist you with your crane selection.