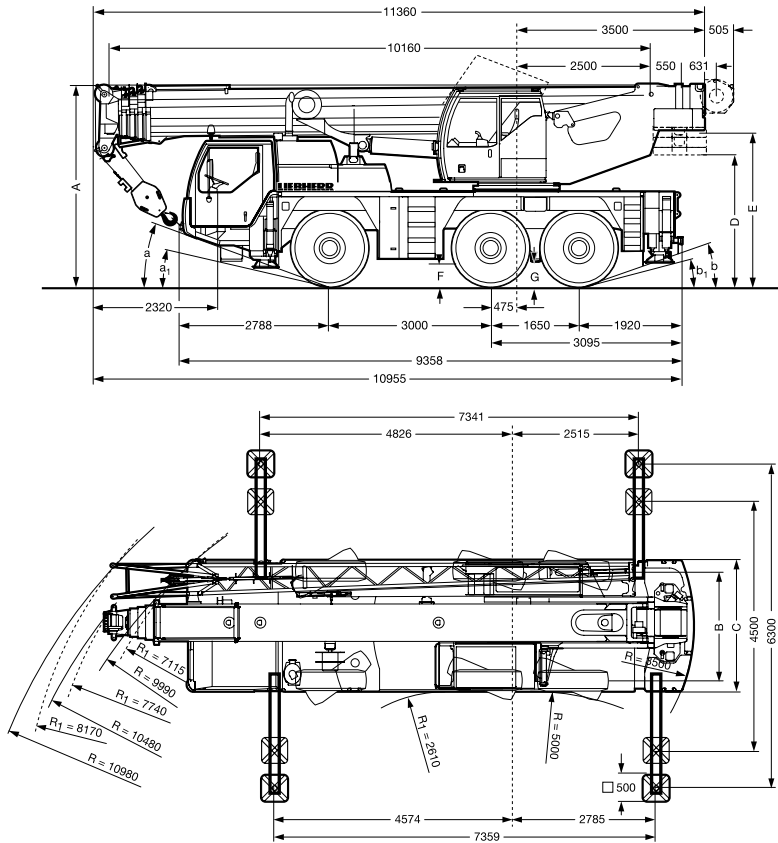


Liebherr LTM 1055

Dimensions



Tyre Width	Dimensions (mm)										
	A	*A 100mm	B	C	D	E	F	α	α^1	β^1	β
14.00 R25	3550	3450	2094	3369	3079	2304	1598	18°	17°	15°	19°
16.00 R25	3600	3500	2054	3419	3129	2354	1648	20°	19°	17°	21°

* lowered

Load Reductions - If Fly Jib fitted to Main Boom in Stowed Position

Boom Length (m)	10.2	13.6	17	20.5	23.9	27.3	30.8	34.2	37.6	40
Load to be Deducted (t)	0.46	0.34	0.27	0.23	0.19	0.17	0.15	0.14	0.12	0.12

Hookblock

Capacity (t)	46.5	30.5	13.4	4.5
Weight (t)	0.33	0.28	0.2	0.08

The charts that have been included have been reproduced from manufacturer specifications, and while every effort has been made to ensure their accuracy, we do not accept any responsibility for errors or omissions. We also need to draw your attention to the guidance notes on page 47 to assist you with your crane selection.

55
Tonne

All Terrain
Cranes

Liebherr LTM 1055

Main Boom Duties

12t Counterweight											
Boom Length (m)	10.2	13.6	17	20.5	23.9	27.3	30.8	34.2	37.6	40	
Radius (m)	*										
2.1	60										
2.5	55										
2.7	54										
3	51	49									
3.5	47	44.5	44.5	42.5							
4	43.5	41	41	38.5	36.5						
4.5	39.5	37.5	37.5	35	33	31					
5	35.5	34.5	34.5	33	31.5	30.5	23.3				
6	26.5	28.8	29	29.1	27.9	26.8	20.9	18.5	15.1		
7	19.7	24.1	24.4	24.9	23.2	22.2	18.9	16.9	14.8	12.1	10.1
8			20.9	21.2	20.2	18.9	17.2	15.6	13.9	11.4	10
9			17.6	17.9	17.4	16.3	15.7	14.3	13.1	10.9	9.5
10			14.9	15.2	15.1	14.3	13.8	13	12.2	10.4	9.1
12				11.4	11.4	11.6	11.4	10.8	10.2	9.5	8.4
14				9.1	9.2	9.3	9.1	8.9	8.6	8.4	7.8
16					7.7	7.6	7.4	7.5	7.5	7	6.9
18						6.4	6.5	6.3	6.3	5.9	5.8
20							5.4	5.5	5.4	5.3	5.1
22								4.7	4.6	4.5	4.2
24								4.1	4	3.8	3.6
26									3.4	3.3	3.1
28									3	2.9	2.7
30										2.5	2.3
32											2
34											1.7
36											1.5

* Over rear

TAB 115148/115004

55
Tonne

All Terrain
Cranes

Liebherr LTM 1055

Fly Jib Duties

12t Counterweight															
Main Boom (m)	10.2			30.8			34.2			37.6			40		
Fly Jib (m)	9.5			9.5			9.5			9.5			9.5		
Radius (m)	0°	20°	40°	0°	20°	40°	0°	20°	40°	0°	20°	40°	0°	20°	40°
3	7.9														
3.5	7.7														
4	7.4														
4.5	7.1														
5	6.8	6.7													
6	6.3	6.5		8.4											
7	5.7	6.1	5.2	8.4			7.7								
8	5.2	5.7	5.2	8.1			7.6			6.3			5.6		
9	4.7	5.3	5.1	7.9	6.7		7.4			6.3			5.6		
10	4.2	4.9	4.9	7.6	6.5		7.2	6.2		6.1			5.4		
12	3.3	3.9	4.2	7	6.2	5.3	6.9	5.9		5.8	5.5		5.1	5.2	
14	2.7	3.3	3.4	6.5	5.9	5.1	6.6	5.7	5	5.5	5.2	4.7	4.8	4.9	4.6
16	2	2.5		6	5.6	4.9	6.2	5.5	4.8	5.3	4.8	4.6	4.6	4.5	4.3
18				5.5	5.4	4.8	5.6	5.3	4.7	4.9	4.5	4.4	4.4	4.2	4.1
20				4	5	4.7	4.8	5.1	4.6	4.5	4.2	4.1	4.1	3.9	3.9
22				4	4.6	4.7	4.2	4.4	4.6	4.1	4	3.9	3.9	3.7	3.7
24				3.8	4	4.2	3.9	3.8	3.9	3.6	3.8	3.7	3.5	3.5	3.5
26				3.5	3.5	3.6	3.4	3.5	3.5	3.1	3.3	3.4	3	3.2	3.3
28				3.1	3.2	3.3	2.9	3.1	3.2	2.7	2.9	3	2.6	2.8	2.9
30				2.7	2.8	2.9	2.6	2.7	2.8	2.3	2.5	2.6	2.3	2.4	2.5
32				2.4	2.5	2.5	2.2	2.3	2.4	2	2.1	2.2	2	2.1	2.2
34				2.1	2.1	2.2	1.9	2	2.1	1.7	1.8	1.9	1.7	1.8	1.9
36				1.8	1.9		1.7	1.8	1.8	1.5	1.6	1.6	1.4	1.5	1.6
38							1.5	1.5	1.5	1.2	1.3	1.4	1.2	1.3	1.4
40							1.3	1.3		1	1.1	1.1	1	1.1	1.1
42										0.9	0.9	0.9	0.8	0.9	0.9
44										0.7	0.7		0.7	0.7	0.7
46														0.6	

TAB 115031/115040/115049

55
Tonne

All Terrain
Cranes

Liebherr LTM 1055

Fly Jib Duties

12t Counterweight															
Main Boom (m)	10.2			30.8			34.2			37.6			40		
Fly Jib (m)	16			16			16			16			16		
Radius (m)	0°	20°	40°	0°	20°	40°	0°	20°	40°	0°	20°	40°	0°	20°	40°
4	4.1														
4.5	4														
5	3.9														
6	3.7														
7	3.6			4.2											
8	3.4	3.3		4.2			3.8								
9	3.2	3.1		4.1			3.8			3.4			3.1		
10	3.1	3		4			3.7			3.3			3.1		
12	2.8	2.8	2.2	3.8	3		3.5			3.2			3.1		
14	2.6	2.6	2.1	3.6	2.9		3.3	2.8		3.1			3		
16	2.3	2.4	2.1	3.4	2.7		3.2	2.7		3	2.6		2.9	2.5	
18	1.9	2.2	2	3.2	2.6	2.2	3.1	2.6	2.2	2.9	2.5		2.8	2.4	
20	1.7	2	1.9	3	2.5	2.2	3	2.5	2.1	2.8	2.4	2.1	2.7	2.3	2.1
22		1.8		2.9	2.4	2.1	2.8	2.4	2.1	2.7	2.3	2.1	2.6	2.3	2
24				2.8	2.3	2.1	2.7	2.3	2.1	2.6	2.2	2	2.5	2.2	2
26				2.6	2.3	2.1	2.6	2.2	2	2.5	2.2	2	2.4	2.2	2
28				2.5	2.2	2	2.5	2.2	2	2.4	2.1	2	2.4	2.1	2
30				2.4	2.1	2	2.4	2.1	2	2.3	2.1	2	2.3	2.1	2
32				2.3	2.1	2	2.3	2.1	2	2.1	2	2	2.1	2	2
34				2.2	2.1	2	2.1	2	2	1.9	2	2	1.8	2	1.9
36				2	2	2	1.8	2	2	1.6	1.8	2	1.6	1.8	1.9
38				1.7	1.8	1.9	1.6	1.7	1.8	1.4	1.6	1.7	1.3	1.5	1.7
40				1.5	1.6	1.6	1.4	1.5	1.6	1.2	1.3	1.4	1.1	1.3	1.4
42				1.3	1.4		1.2	1.3	1.3	1	1.1	1.2	0.9	1.1	1.2
44							1	1.1	1.1	0.8	0.9	1	0.8	0.9	1
46							0.9	0.9		0.7	0.8	0.8	0.6	0.7	0.8
48											0.6	0.6		0.6	0.6

TAB 115031/115040/115049

The charts that have been included have been reproduced from manufacturer specifications, and while every effort has been made to ensure their accuracy, we do not accept any responsibility for errors or omissions. We also need to draw your attention to the guidance notes on page 47 to assist you with your crane selection.

55
Tonne
All Terrain
Cranes