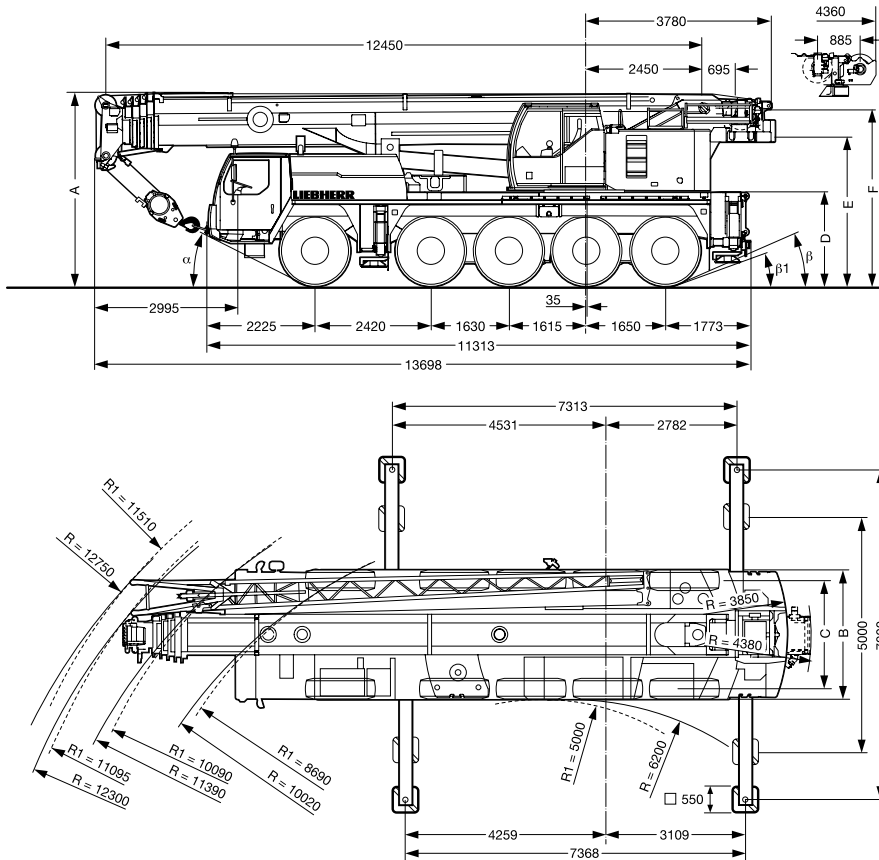


# Liebherr LTM 1095-5.1

## Dimensions



Tyre Width	Dimensions (mm)									
	A	*A 100mm	B	C	D	E	F	$\alpha$	$\beta$	$\beta^1$
16.00 R25	4000	3900	2750	2310	1940	3085	3745	27°	22°	17°

\* lowered

## Load Reductions (Fly Jib Stowed)

Boom Length (m)	12.5	16.6	20.8	25	29.2	33.4	37.6	41.8	46	50.2	54.4	58.0
Load to be Deducted (t)	0.92	0.69	0.55	0.46	0.39	0.34	0.31	0.28	0.25	0.23	0.21	0.2

## Hookblock

Capacity (t)	58.4	38.3	16	5.7
Weight (t)	0.5	0.45	0.3	0.14

The charts that have been included have been reproduced from manufacturer specifications, and while every effort has been made to ensure their accuracy, we do not accept any responsibility for errors or omissions. We also need to draw your attention to the guidance notes on page 47 to assist you with your crane selection.

**100**  
Tonne

All Terrain  
Cranes

# Liebherr LTM 1095-5.1

## Lifting Capacities on Telescopic Boom

Main Boom (m)	23t Counterweight												
	12.5	16.6	20.8	25	29.2	33.4	37.6	41.8	46	50.2	54.4	58	
Radius (m)	*												
3	95	75	63										
3.5	73	69	63	58									
4	69	64	63	58	48.5								
4.5	66	59	59	55	48	38							
5	61	54	54	53	47	37.5	30						
6	49.5	46	46.5	46.5	45	36	29.3	22.4					
7	41	39.5	40.5	40	40	35	28.4	22	18.2				
8	35	34	34.5	34.5	34	33.5	27.3	20.9	17.5	13.7			
9	30	29.4	30	29.7	30.5	29.9	25.8	19.7	16.6	13.4	10.3		
10	26.4	25.8	26.5	26.1	26.7	26.3	24.3	18.5	15.6	12.9	10.1	8	
11			23.5	23.7	23.6	23.3	22.9	17.3	14.7	12.4	9.8	8	6.2
12			21	21.2	21.1	20.8	20.8	16.2	13.9	11.9	9.5	7.9	6.2
14			17.1	17.3	17.2	17.7	17.2	14.3	12.4	10.7	8.9	7.5	5.8
16				14.7	14.9	14.7	14.4	12.6	11.1	9.7	8.2	7	5.5
18				12.4	12.4	12.3	12	11.2	10	8.7	7.6	6.5	5.3
20					10.6	10.5	10.1	10.1	9	8	7	6.1	5
22					9.1	9	8.7	9	8.2	7.3	6.5	5.6	4.7
24						7.8	8.1	7.8	7.1	6.6	6	5.3	4.4
26						6.8	7.2	6.8	6.5	6.1	5.5	4.9	4.2
28							6.3	6	5.8	5.4	5	4.6	3.9
30							5.6	5.3	5.5	4.7	4.6	4.3	3.7
32								4.7	4.8	4.4	4.2	4	3.4
34								4.3	4.3	4	3.7	3.7	3.2
36									3.8	3.7	3.4	3.4	3
38									3.4	3.4	3.2	3	2.9
40										3.1	3	2.7	2.7
42										2.7	2.6	2.3	2.3
44											2.3	2	2
46											2	1.7	1.7
48												1.5	1.5
50												1.2	1.2
52													1
54													0.9

\* Over rear

The charts that have been included have been reproduced from manufacturer specifications, and while every effort has been made to ensure their accuracy, we do not accept any responsibility for errors or omissions. We also need to draw your attention to the guidance notes on page 47 to assist you with your crane selection.

# Liebherr LTM 1095-5.1

## Lifting Capacities on Folding Jib

23t Counterweight												
Main Boom (m)	46			50.2			54.4			58		
Folding Jib (m)	10.5			10.5			10.5			10.5		
Radius (m)	0°	20°	40°	0°	20°	40°	0°	20°	40°	0°	20°	40°
9	7											
10	7			5.1								
11	7			5.1			4					
12	7			5.1			4			3.2		
14	7	6.7		5.1	5.1		4			3.2		
16	6.7	6.4	5.7	5	4.9		3.9	3.9		3.2	3.2	
18	6.3	6	5.6	4.9	4.6	4.5	3.8	3.7	3.6	3.2	3.2	
20	5.8	5.6	5.4	4.6	4.4	4.2	3.6	3.6	3.5	3.2	3.1	3.1
22	5.4	5.2	5.1	4.3	4.1	4	3.5	3.4	3.4	3.1	3	3
24	5	4.9	4.8	4	3.9	3.8	3.3	3.2	3.2	3	2.9	2.9
26	4.7	4.5	4.5	3.8	3.6	3.6	3.2	3.1	3.1	2.9	2.8	2.8
28	4.3	4.2	4.2	3.5	3.4	3.4	3	2.9	2.9	2.7	2.7	2.7
30	3.9	3.9	3.9	3.3	3.3	3.3	2.9	2.8	2.8	2.6	2.5	2.5
32	3.6	3.6	3.6	3.1	3.1	3.1	2.7	2.7	2.7	2.4	2.4	2.4
34	3.3	3.3	3.4	2.9	2.9	2.9	2.6	2.5	2.5	2.3	2.3	2.3
36	2.9	3.1	3.2	2.7	2.8	2.8	2.4	2.4	2.4	2.2	2.2	2.2
38	2.5	2.7	2.9	2.6	2.6	2.6	2.3	2.3	2.3	2.1	2.1	2.1
40	2.4	2.4	2.5	2.3	2.4	2.5	2.2	2.2	2.2	2	2	2
42	2.2	2.3	2.3	2	2.1	2.2	2.1	2.1	2.1	1.8	1.9	1.9
44	1.9	2	2.1	1.9	1.9	1.9	1.8	2	2	1.7	1.8	1.8
46	1.6	1.7	1.8	1.8	1.8	1.8	1.5	1.7	1.8	1.4	1.6	1.7
48	1.5	1.6	1.6	1.5	1.7	1.7	1.2	1.4	1.5	1.2	1.3	1.4
50	1.4	1.5		1.3	1.4	1.4	1	1.1	1.2	1	1.1	1.2
52	1.3	1.3		1.1	1.2			0.9	1		0.9	1
54				0.9	1							
56				0.7	0.8							



**100**  
Tonne

All Terrain  
Cranes



The charts that have been included have been reproduced from manufacturer specifications, and while every effort has been made to ensure their accuracy, we do not accept any responsibility for errors or omissions. We also need to draw your attention to the guidance notes on page 47 to assist you with your crane selection.

# Liebherr LTM 1095-5.1

## Lifting Capacities on Folding Jib

23t Counterweight												
Main Boom (m)	46			50.2			54.4			58		
Folding Jib (m)	19			19			19			19		
Radius (m)	0°	20°	40°	0°	20°	40°	0°	20°	40°	0°	20°	40°
11	3											
12	3			2.8								
14	3			2.8			2.3					
16	3			2.8			2.3			1.9		
18	3	2.7		2.8			2.3			1.9		
20	3	2.7		2.8	2.6		2.3			1.9		
22	3	2.6		2.8	2.6		2.3	2.3		1.9	1.9	
24	2.9	2.6	2.3	2.7	2.5	2.2	2.3	2.3		1.9	1.9	
26	2.8	2.5	2.2	2.7	2.5	2.2	2.3	2.3	2.1	1.8	1.9	
28	2.8	2.5	2.2	2.7	2.4	2.2	2.3	2.2	2.1	1.8	1.9	1.9
30	2.7	2.4	2.2	2.6	2.4	2.2	2.2	2.2	2.1	1.8	1.9	1.9
32	2.6	2.4	2.2	2.5	2.3	2.1	2.1	2.1	2	1.8	1.9	1.9
34	2.4	2.3	2.2	2.4	2.3	2.1	2	2	2	1.7	1.8	1.8
36	2.3	2.2	2.1	2.3	2.2	2.1	2	1.9	1.9	1.7	1.8	1.8
38	2.2	2.2	2.1	2.2	2.2	2.1	1.9	1.9	1.9	1.7	1.7	1.7
40	2.1	2.1	2.1	2.1	2.1	2.1	1.8	1.8	1.8	1.6	1.6	1.7
42	2	2	2	2	2	2	1.7	1.7	1.7	1.6	1.6	1.6
44	1.8	1.9	1.9	1.9	1.9	1.9	1.6	1.6	1.7	1.5	1.5	1.5
46	1.7	1.8	1.8	1.6	1.8	1.9	1.6	1.6	1.6	1.4	1.4	1.5
48	1.7	1.7	1.7	1.5	1.7	1.8	1.4	1.5	1.5	1.3	1.4	1.4
50	1.4	1.6	1.6	1.4	1.4	1.6	1.2	1.4	1.5	1.1	1.3	1.3
52	1.2	1.4	1.5	1.3	1.3	1.4	1	1.3	1.4	0.9	1.2	1.3
54	1.1	1.2	1.3	1.1	1.3	1.3	0.8	1.1	1.2		1	1.2
56	1	1.1	1.1	0.9	1.1	1.2		0.9	1		0.8	0.9
58	1	1		0.8	0.9	1			0.8			
60	0.8	0.9			0.7	0.8						
62	0.7											

The charts that have been included have been reproduced from manufacturer specifications, and while every effort has been made to ensure their accuracy, we do not accept any responsibility for errors or omissions. We also need to draw your attention to the guidance notes on page 47 to assist you with your crane selection.