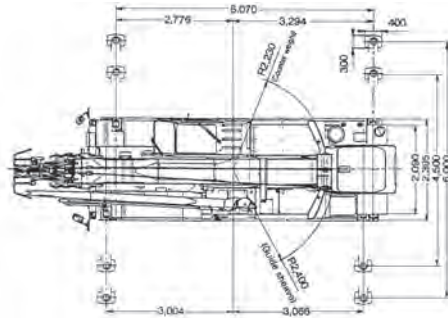
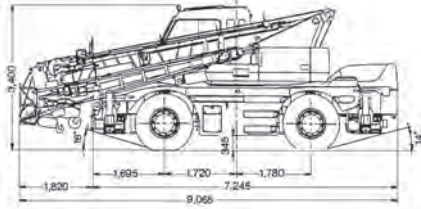
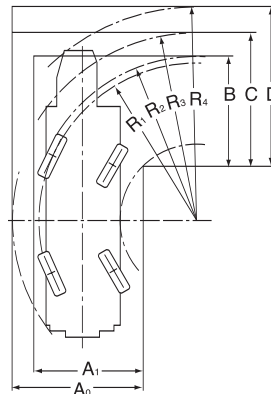
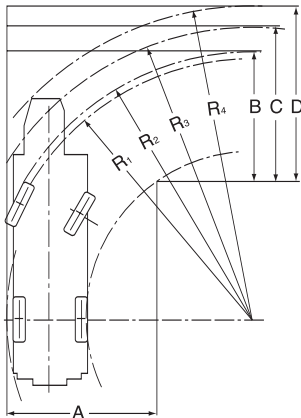


Dimensions



Right turn in two-wheel steering mode

Right turn in four-wheel steering mode



- $R_1 = 8.30\text{m}$ (Minimum turning radius)
- $R_2 = 8.49\text{m}$ (Turning radius of extremely outer tire)
- $R_3 = 9.25\text{m}$ (Chassis turning radius)
- $R_4 = 9.93\text{m}$ (Boom end turning radius)

- $R_1 = 5.00\text{m}$ (Minimum turning radius)
- $R_2 = 5.19\text{m}$ (Turning radius of extremely outer tire)
- $R_3 = 5.95\text{m}$ (Chassis turning radius)
- $R_4 = 6.77\text{m}$ (Boom end turning radius)

- $A = 4.85\text{m}$ (Width of entrance)
- $B = 4.13\text{m}$ (Width of wheel exit)
- $C = 4.89\text{m}$ (Width of chassis exit)
- $D = 5.56\text{m}$ (Width of exit at end of boom)

- $A_0 = 4.16\text{m}$ (Width of entrance)
- $A_1 = 3.48\text{m}$ (Width of wheel entrance)
- $B = 3.44\text{m}$ (Width of wheel exit)
- $C = 4.20\text{m}$ (Width of chassis exit)
- $D = 5.02\text{m}$ (Width of exit at end of boom)

Hookblock

Capacity	22	4
Weight	0.2	0.06

The charts that have been included have been reproduced from manufacturer specifications, and while every effort has been made to ensure their accuracy, we do not accept any responsibility for errors or omissions. We also need to draw your attention to the guidance notes on page 48 to assist you with your crane selection.

Fly Jib Duties

28.0m Boom + 5.4m Jib (Standard hook for 4.0 ton - Hook mass 60kg)						
Outriggers fully extended (6.0m) – 360° full range						
Boom Angle (°)	Offset 5°		Offset 25°		Offset 45°	
	Working Radius (m)	Load (t)	Working Radius (m)	Load (t)	Working Radius (m)	Load (t)
81.0	5.2	3.00	7.0	2.50	8.3	1.55
77.7	7.2	3.00	8.9	2.50	10.0	1.55
75.0	8.9	3.00	10.4	2.30	11.4	1.50
73.0	10.0	3.00	11.5	2.14	12.4	1.46
70.0	11.7	2.60	13.1	1.94	13.9	1.42
65.0	14.3	2.15	15.7	1.69	16.3	1.35
60.0	16.8	1.83	18.1	1.49	18.7	1.30
55.0	19.2	1.55	20.3	1.35	20.8	1.25
54.0	19.6	1.45	20.7	1.32	21.2	1.22
52.0	20.4	1.29	21.5	1.19	22.0	1.18
50.0	21.2	1.14	22.3	1.05	22.7	1.08
48.0	22.0	1.01	23.0	0.94	23.3	0.99
45.0	23.2	0.82	24.1	0.77		
40.0	25.0	0.58	25.8	0.54		
35.0	26.6	0.40	27.2	0.38		
Critical Boom Angle	33°		33°		46°	

28.0m Boom + 5.4m Jib (Standard hook for 4.0 ton - Hook mass 60kg)						
Outriggers intermediately extended (4.5m) – 360° full range						
Boom Angle (°)	Offset 5°		Offset 25°		Offset 45°	
	Working Radius (m)	Load (t)	Working Radius (m)	Load (t)	Working Radius (m)	Load (t)
81.0	5.2	3.00	7.0	2.50	8.3	1.55
77.7	7.2	3.00	8.9	2.50	10.0	1.55
75.0	8.9	3.00	10.4	2.30	11.4	1.50
73.0	10.0	3.00	11.5	2.14	12.4	1.46
70.0	11.7	2.60	13.1	1.94	13.9	1.42
69.0	12.2	2.50	13.6	1.88	14.4	1.40
67.0	13.2	2.14	14.7	1.77	15.3	1.37
64.0	14.7	1.63	16.0	1.46	16.8	1.33
60.0	16.6	1.14	17.9	1.02	18.5	1.00
55.0	18.9	0.70	19.9	0.67	20.7	0.60
50.0	21.0	0.39	21.9	0.37		
Critical Boom Angle	48°		48°		53°	

28.0m Boom + 8.2m Jib (Standard hook for 4.0 ton - Hook mass 60kg)						
Outriggers fully extended (6.0m) – 360° full range						
Boom Angle (°)	Offset 5°		Offset 25°		Offset 45°	
	Working Radius (m)	Load (t)	Working Radius (m)	Load (t)	Working Radius (m)	Load (t)
81.0	6.0	2.00	8.7	1.20	10.5	0.80
77.7	8.7	2.00	11.1	1.20	12.7	0.80
75.0	10.0	2.00	12.2	1.20	13.7	0.78
72.0	11.9	1.81	14.0	1.20	15.3	0.75
70.0	13.0	1.71	15.1	1.18	16.4	0.74
65.0	15.9	1.49	17.8	1.12	18.9	0.72
60.0	18.6	1.33	20.3	1.05	21.3	0.69
55.0	21.2	1.20	22.7	0.98	23.5	0.67
53.0	22.1	1.14	23.6	0.95	24.3	0.66
50.0	23.5	0.96	24.9	0.77	25.4	0.65
47.0	24.7	0.80	26.1	0.63	26.5	0.64
45.0	25.6	0.69	26.8	0.56		
40.0	27.5	0.49	28.5	0.39		
35.0	29.1	0.33				
Critical Boom Angle	33°		38°		45°	

28.0m Boom + 8.2m Jib (Standard hook for 4.0 ton - Hook mass 60kg)						
Outriggers intermediately extended (4.5m) – 360° full range						
Boom Angle (°)	Offset 5°		Offset 25°		Offset 45°	
	Working Radius (m)	Load (t)	Working Radius (m)	Load (t)	Working Radius (m)	Load (t)
81.0	6.0	2.00	8.7	1.20	10.5	0.80
77.7	8.7	2.00	11.1	1.20	12.7	0.80
75.0	10.0	2.00	12.2	1.20	13.7	0.78
72.0	11.9	1.81	14.0	1.20	15.3	0.75
70.0	13.0	1.71	15.1	1.18	16.4	0.74
65.0	15.9	1.49	17.8	1.12	18.9	0.72
63.0	16.9	1.26	18.8	1.09	19.8	0.70
60.0	18.4	0.98	20.2	0.87	21.3	0.69
58.0	19.4	0.81	21.2	0.72	22.2	0.68
55.0	20.8	0.60	22.5	0.54	23.3	0.53
50.0	23.1	0.31				
Critical Boom Angle	48°		53°		53°	

The charts that have been included have been reproduced from manufacturer specifications, and while every effort has been made to ensure their accuracy, we do not accept any responsibility for errors or omissions. We also need to draw your attention to the guidance notes on page 48 to assist you with your crane selection.



Free on Wheels Duties

Stationary on rubber (without outriggers)						
Working Radius (m)	6.7m Boom		11.0m Boom		15.2m Boom	
	Over Front	360° Full Range	Over Front	360° Full Range	Over Front	360° Full Range
3.0		6.00		5.50		5.20
3.5	8.50	4.50	8.50	4.10	8.00	3.80
4.0	8.50	3.30	8.50	3.20	8.00	3.00
4.5	7.50	2.55	7.20	2.55	6.50	2.40
5.0			6.10	2.00	5.40	1.90
5.5			5.10	1.55	4.55	1.50
6.0			4.25	1.20	3.85	1.15
6.5			3.55	0.90	3.30	0.85
7.0			3.00	0.65	2.80	
8.0			2.15		2.05	
9.0			1.55		1.50	
10.0					1.00	
11.0					0.60	
Standard Hook	for 22 ton					
Hook Mass	200kg					
Parts of Line	6		4			
Critical Boom Angle	-	-	-	30°	33°	57°

Pick & Carry Duties

Pick & Carry (less than 2km/h) (without outriggers)						
Working Radius (m)	6.7m Boom		11.0m Boom		15.2m Boom	
	Over Front	360° Full Range	Over Front	360° Full Range	Over Front	360° Full Range
3.0		4.80		4.40		4.00
3.5	6.80	3.60	6.40	3.30	5.90	3.00
4.0	6.80	2.65	6.40	2.55	5.90	2.40
4.5	6.00	2.05	5.50	2.05	5.00	1.90
5.0			4.75	1.50	4.30	1.40
5.5			4.10	1.05	3.65	1.00
6.0			3.40	0.65	3.10	0.60
6.5			2.85		2.65	
7.0			2.40		2.25	
8.0			1.65		1.60	
9.0			1.00		1.00	
10.0					0.50	
11.0						
Standard Hook	for 22 ton					
Hook Mass	200kg					
Parts of Line	6		4			
Critical Boom Angle	-	-	-	42°	35°	60°

The charts that have been included have been reproduced from manufacturer specifications, and while every effort has been made to ensure their accuracy, we do not accept any responsibility for errors or omissions. We also need to draw your attention to the guidance notes on page 48 to assist you with your crane selection.