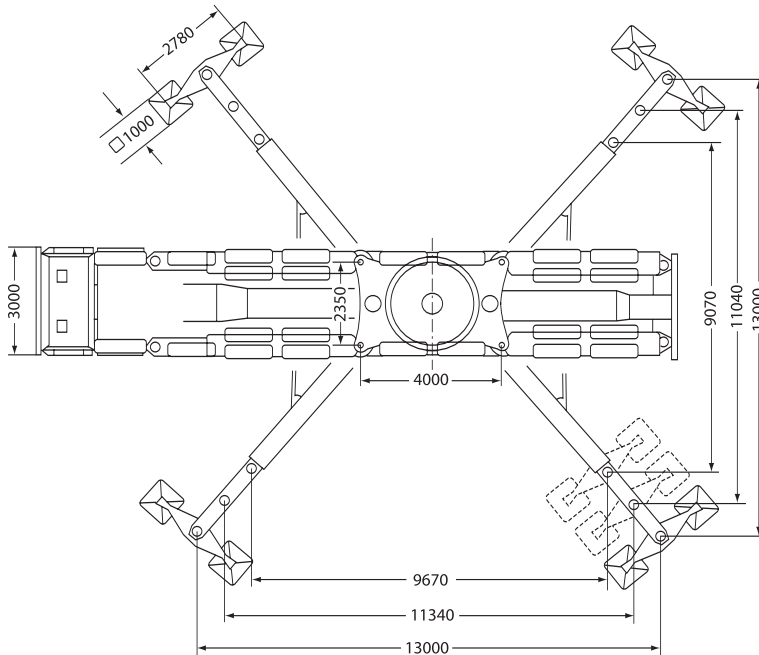
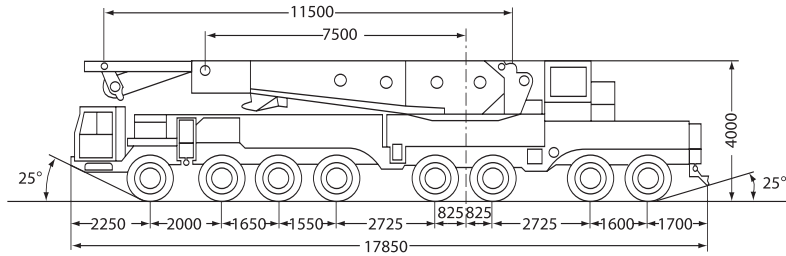


Liebherr LTM 11000 DS

Dimensions



1000
Tonne

Heavy Cranes

Hookblock

Capacity	350	235	93	41	14.3
Weight	5	4	2	1.2	0.6

The charts that have been included have been reproduced from manufacturer specifications, and while every effort has been made to ensure their accuracy, we do not accept any responsibility for errors or omissions. We also need to draw your attention to the guidance notes on page 48 to assist you with your crane selection.

Liebherr LTM 11000 DS

TD Boom / Derrick Combination

160t counterweight

Radius (m)	26m		31,6m		38,4m		44m		50,7m		56,4m	
	*	**	*	**	*	**	*	**	*	**	*	**
8	307	300										
9	272	275	271	218								
10	243	246	243	215	242	197						
12	200	203	199	204	198	192	200	149				
14	168	171	167	172	167	173	169	147	157	157	134	136
16	143	147	142	148	143	150	144	143	139	145	120	136
18	124	128	123	129	124	131	125	129	125	127	108	127
20	109	112	108	113	109	116	110	117	112	111	98	112
22	96	99	95	101	96	103	97	105	100	99	90	100
24	85	89	84	90	85	93	87	94	89	88	83	89
26			75	81	76	84	78	85	80	79	76	80
28			67	73	69	76	70	78	73	72	71	73
30					62	69	63	71	66	65	66	66
32					56	63	57	65	60	59	61	60
34					51	58	52	60	55	54	56	55
36							47,5	55	50	49,5	51	51
38							43,5	51	46	45,5	47,5	46,5
40							40	47,5	42,5	41,5	43,5	43
42									39	38,5	40,5	39,5
44									36	35,5	37,5	36,5
46									33,5	32,5	34,5	34
48											32	31
50											29,7	28,9
	Telescope											
I	50	0	92	0	92	0	92	0	92	92	92	92
II	0	50	0	92	50	92	92	92	92	92	92	92
III	0	0	0	0	0	50	0	92	50	50	92	92

* Denotes Suspension Point 1

** Denotes Suspension Point 2



1000
Tonne

Heavy Cranes



Liebherr LTM 11000 DS

Lifting capacities with main boom and Derrick counterweight

Main Boom 26.0m

Radius (m)	Derrick counterweight									
	0t		50t		100t		150t		200t	
	A	B	A	B	A	B	A	B	A	B
8	307.0*	288.0**	350.0*	336.0*						
9	275.0*	263.0**	298.0*	298.0*	348.0*	320.0*				
10	246.0*	235.0**	287.0**	287.0*	331.0*	305.0*				
12	203.0*	194.0**	225.0**	225.0**	269.0*	269.0*	302.0*	278.0*		
14	171.0*	163.0**	183.0**	183.0**	240.0**	240.0**	276.0*	255.0*	278.0*	255.0*
16	147.0*	140.0**	152.0**	152.0**	202.0**	202.0**	251.0**	232.0*	257.0*	236.0*
18	128.0*	122.0**	129.0**	129.0**	173.0**	173.0**	216.0**	212.0**	238.0*	219.0*
20	112.0*	107.0**	111.0**	111.0**	150.0**	150.0**	189.0**	189.0**	218.0*	204.0*
22	99.0*	95.0**	97.0**	97.0**	132.0**	132.0**	167.0**	167.0**	192.0**	185.0*
24	89.0*	85.0**	85.0**	85.0**	117.0**	117.0**	149.0**	149.0**	162.0**	162.0**

Main Boom 31.8m

Radius (m)	Derrick counterweight									
	0t		50t		100t		150t		200t	
	A	B	A	B	A	B	A	B	A	B
9	271.0*	259.0*	293.0*	293.0*						
10	243.0*	232.0*	284.0*	284.0*	288.0*	288.0*				
12	204.0**	195.0**	221.0*	221.0*	278.0*	264.0*				
14	172.0**	164.0**	185.0**	185.0**	236.0*	236.0*	267.0*	242.0*		
16	148.0**	141.0**	154.0**	154.0**	198.0*	198.0*	246.0*	223.0*		
18	129.0**	123.0**	131.0**	131.0**	175.0**	175.0**	212.0*	212.0*	228.0*	207.0*
20	113.0**	108.0**	119.0**	113.0**	152.0**	152.0**	184.0*	184.0*	212.0*	192.0*
22	101.0**	96.0**	99.0**	99.0**	134.0**	134.0**	169.0**	169.0**	198.0*	185.0**
24	90.0**	86.0**	87.0**	87.0**	119.0**	119.0**	151.0**	151.0**	180.0**	173.0**
26	81.0**	77.0**	77.0**	77.0**	106.0**	106.0**	136.0**	136.0**	165.0**	163.0**
28	73.0**	70.0**	69.0**	69.0**	96.0**	96.0**	123.0**	123.0**	150.0**	150.0**

Main Boom 38.4m

Radius (m)	Derrick counterweight									
	0t		50t		100t		150t		200t	
	A	B	A	B	A	B	A	B	A	B
10	242.0*	231.0*	243.0*	243.0*						
12	198.0*	192.0**	223.0*	223.0*	239.0*	239.0*				
14	173.0**	166.0**	181.0*	181.0*	235.0*	235.0*				
16	150.0**	143.0**	158.0**	158.0**	200.0*	200.0*	228.0*	224.0*		
18	131.0**	125.0**	135.0**	135.0**	171.0*	171.0*	209.0*	208.0*		
20	116.0**	110.0**	117.0**	117.0**	156.0**	156.0**	187.0*	187.0*	193.0*	193.0*
22	103.0**	98.0**	103.0**	103.0**	138.0**	138.0**	165.0*	165.0*	181.0*	180.0*
24	93.0**	88.0**	91.0**	91.0**	123.0**	123.0**	147.0*	147.0*	170.0*	169.0*
26	84.0**	80.0**	81.0**	81.0**	110.0**	110.0**	131.0*	131.0*	161.0*	159.0*
28	76.0**	72.0**	73.0**	73.0**	100.0**	100.0**	127.0**	127.0**	146.0*	146.0*
30	69.0**	66.0**	66.0**	66.0**	91.0**	91.0**	116.0**	116.0**	133.0*	133.0*
32	63.0**	60.0**	59.0**	59.0**	83.0**	83.0**	106.0**	106.0**	122.0*	122.0*
34	58.0**	55.0**	54.0**	54.0**	76.0**	76.0**	98.0**	98.0**	112.0*	112.0*

* Denotes suspension point 1

'A' Denotes 13.0m x 13.0m on outrigger

** Denotes suspension point 2

'B' Denotes 111.3m x 11.0m on outrigger

The charts that have been included have been reproduced from manufacturer specifications, and while every effort has been made to ensure their accuracy, we do not accept any responsibility for errors or omissions. We also need to draw your attention to the guidance notes on page 48 to assist you with your crane selection.

Liebherr LTM 11000 DS

Lifting capacities with main boom and Derrick counterweight

Main Boom 44.0m

Radius (m)	Derrick counterweight									
	0t		50t		100t		150t		200t	
	A	B	A	B	A	B	A	B	A	B
12	200.0*	191.0**	206.0*	206.0*						
14	169.0*	161.0**	182.0*	182.0*	202.0*	202.0*				
16	144.0*	143.0**	152.0*	152.0*	180.0*	180.0*				
18	129.0**	127.0**	129.0*	129.0*	161.0*	161.0*				
20	117.0**	112.0**	111.0*	111.0*	146.0*	146.0*				
22	105.0**	100.0**	105.0**	105.0**	131.0*	131.0*	134.0*	134.0*	134.0*	134.0*
24	94.0**	90.0**	93.0**	93.0**	116.0*	116.0*	124.0*	124.0*	124.0*	124.0*
26	85.0**	81.0**	83.0**	83.0**	104.0*	104.0*	116.0*	116.0*	116.0*	116.0*
28	78.0**	74.0**	75.0**	75.0**	93.0*	93.0*	109.0*	109.0*	109.0*	109.0*
30	71.0**	68.0**	68.0**	68.0**	84.0*	84.0*	104.0*	104.0*	104.0*	104.0*
32	65.0**	62.0**	61.0**	61.0**	76.0*	76.0*	99.0*	99.0*	99.0*	99.0*
34	60.0**	57.0**	56.0**	56.0**	69.0*	69.0*	91.0*	91.0*	94.0*	94.0*
36	55.0**	52.0**	51.0**	51.0**	63.0*	63.0*	84.0*	84.0*	90.0*	90.0*
38	51.0**	48.5**	47.0**	47.0**	62.0*	62.0*	77.0*	77.0*	85.0*	85.0*
40	47.5**	44.5**	43.0**	43.0**	62.0**	62.0**	72.0*	72.0*	79.0*	79.0*

Main Boom 50.7m

Radius (m)	Derrick counterweight									
	0t		50t		100t		150t		200t	
	A	B	A	B	A	B	A	B	A	B
14	157.0**	157.0*								
16	145.0**	139.0*	153.0**	153.0**						
18	127.0**	122.0*	146.0**	146.0**	150.0**	150.0**				
20	112.0*	107.0*	126.0**	126.0**	146.0**	146.0**				
22	100.0*	95.0*	110.0**	110.0**	143.0**	143.0**				
24	89.0*	85.0*	97.0**	97.0**	130.0**	130.0**	139.0**	139.0**		
26	80.0*	76.0*	87.0**	87.0**	116.0**	116.0**	135.0**	135.0**		
28	73.0*	69.0*	78.0*	78.0**	105.0**	105.0**	132.0**	132.0**		
30	66.0*	62.0*	70.0*	70.0*	95.0**	95.0**	120.0**	120.0**	129.0**	129.0**
32	60.0*	57.0*	63.0*	63.0*	86.0**	86.0**	110.0**	110.0**	126.0**	126.0**
34	55.0*	52.0*	58.0*	58.0*	79.0**	79.0**	101.0**	101.0**	123.0**	122.0**
36	50.0*	47.5*	52.0*	52.0*	72.0**	72.0**	93.0**	93.0**	114.0**	114.0**
38	46.0*	43.5*	48.0*	48.0*	67.0**	67.0**	86.0**	86.0**	106.0**	106.0**
40	42.5*	40.0*	44.0*	44.0*	61.0**	61.0**	80.0**	80.0**	99.0**	99.0**
42	39.0*	36.5*	40.0*	40.0*	57.0**	57.0**	74.0**	74.0**	92.0**	92.0**
44	36.0*	34.0*	37.0*	37.0*	53.0**	53.0**	69.0**	69.0**	86.0**	86.0**
46	33.5*	31.0*	34.0*	34.0*	50.0*	50.0*	65.0**	65.0**	81.0**	81.0**

* Denotes suspension point 1

'A' Denotes 13.0m x 13.0m outriggers

** Denotes suspension point 2

'B' Denotes 111.3m x 11.0m outriggers

1000
Tonne

Heavy Cranes

Liebherr LTM 11000 DS

Lifting capacities with main boom and Derrick counterweight

Main Boom 56.4m

Radius (m)	Derrick counterweight									
	0t		50t		100t		150t		200t	
	A	B	A	B	A	B	A	B	A	B
14	136.0**	136.0**								
16	136.0**	136.0**								
18	127.0**	121.0**	136.0**	136.0**						
20	112.0**	107.0**	128.0**	128.0**	132.0**	132.0**				
22	100.0**	95.0**	112.0**	112.0**	124.0**	124.0**				
24	89.0**	85.0**	99.0**	99.0**	116.0**	116.0**				
26	80.0**	77.0**	88.0**	88.0**	109.0**	109.0**				
28	73.0**	70.0*	79.0**	79.0**	102.0**	102.0**				
30	66.0**	64.0*	71.0**	71.0**	96.0**	96.0**				
32	61.0*	58.0*	65.0**	65.0**	88.0**	88.0**	91.0**	91.0**		
34	56.0*	53.0*	59.0**	59.0**	81.0**	81.0**	86.0**	86.0**		
36	51.0*	48.5*	54.0*	54.0*	74.0**	74.0**	82.0**	82.0**		
38	47.5*	44.5*	49.0*	49.0*	68.0**	68.0**	78.0**	78.0**		
40	43.5*	41.0*	45.0*	45.0*	63.0**	63.0**	75.0**	75.0**		
42	40.5*	38.0*	42.0*	42.0*	59.0**	59.0**	72.0**	72.0**		
44	37.5*	35.0*	38.0*	38.0*	54.0**	54.0**	69.0**	69.0**		
46	34.5*	32.5*	35.0*	35.0*	50.0**	50.0**	66.0**	66.0**		
48	32.0*	29.7*	32.0*	32.0*	47.0**	47.0**	62.0**	62.0**	64.0**	64.0**
50	29.7*	27.2*	30.0*	30.0*	44.0**	44.0**	59.0**	59.0**	62.0**	62.0**

* Denotes suspension point 1
 ** Denotes suspension point 2

'A' Denotes 13.0m x 13.0m outriggers
 'B' Denotes 111.3m x 11.0m outriggers

1000
Tonne

Heavy Cranes

Liebherr LTM 11000 DS

Lifting Capacities Main Boom 83° - Derrick Luffing Fly Jib (TDN)

Radius (m)	Derrick Mast 31.5m - Suspension Point 1 - Luffing Fly jib																						
	Telescopic Boom 42.0m									Telescopic Boom 47.6m													
	21.0	28.0	35.0	42.0	49.0	56.0	63m	70.0	77.0	84.0	91.0	21.0	28.0	35.0	42.0	49.0	56.0	63.0	70.0	77.0	84.0	91.0	
17	107.0											97.0											
18	107.0											97.0	77.0										
20	107.0	87																					
22	103.0	83.0	75.0									93.0	75.0	65.0									
24	94.0	80.0	73.0	63.0								88.0	73.0	65.0									
26	84.0	77.0	71.0	62.0	51.0							83.0	70.0	63.0	54.0								
28	78.0	74.0	69.0	60.0	51.0	42.0						76.0	68.0	62.0	53.0	44.5							
30		70.0	67.0	59.0	51.0	42.0	34.0					66.0	66.0	60.0	53.0	44.5	36.5						
32		64.0	63.0	58.0	50.0	42.0	33.5	29.0				64.0	59.0	52.0	44.5	36.5	30.5						
34		59.0	58.0	55.0	49.5	42.0	33.0	28.4	24.0			60.0	58.0	51.0	44.5	36.5	29.9	25.4					
36		54.0	52.0	47.5	42.0	32.5	27.8	23.6	19.5			54.0	54.0	49.0	44.5	36.5	29.4	24.9	20.8				
38		50.0	49.0	45.5	41.0	32.0	27.3	23.2	19.5			50.0	47.5	43.0	36.5	28.9	24.5	20.6	16.8				
40		46.5	45.5	43.5	39.5	31.0	26.8	22.7	19.1	16.0		47.0	45.5	41.5	36.5	28.5	24.1	20.2	16.8	13.6			
42		43.5	42.5	41.0	38.5	30.5	26.3	22.3	18.7	16.0		44.0	42.5	39.5	36.0	28.0	23.7	19.9	16.7	13.6			
44			39.5	38.5	37.5	30.0	25.8	21.9	18.4	15.8		40.0	38.0	35.0	27.6	23.3	19.6	16.4	13.6				
46			37.0	36.5	36.5	29.4	25.4	21.5	18.0	15.5		37.5	36.5	34.0	27.3	22.9	19.2	16.1	13.6				
48				34.5	34.0	33.5	28.6	25.0	21.1	17.7	15.1		35.0	34.5	33.0	26.9	22.6	18.9	15.9	13.5			
50					32.0	31.5	27.7	24.4	20.7	17.4	14.8		33.0	32.5	31.5	26.6	22.2	18.6	15.6	13.3			
52						30.0	29.6	26.9	23.8	20.4	17.0	14.5			30.5	29.9	25.9	21.8	18.3	15.3	13.0		
54						28.3	27.9	26.1	23.2	20.1	16.7	14.3			28.7	28.3	25.3	21.4	18.1	15.1	12.8		
56						26.4	26.3	25.3	22.6	19.8	16.5	14.0			27.0	26.7	24.6	21.0	17.8	14.8	12.5		
58							24.7	23.9	22.0	19.3	16.2	13.8				25.2	23.9	20.6	17.6	14.6	12.3		
60							23.2	22.5	21.3	18.8	16.0	13.5				23.8	23.2	20.1	17.3	14.4	12.1		
62							21.8	21.3	20.7	18.3	15.7	13.1				22.4	21.9	19.7	17.0	14.2	11.9		
64								20.0	19.6	17.8	15.3	13.1					20.7	19.3	16.6	14.0	11.7		
66								18.8	18.5	17.2	14.9	12.8					19.5	18.9	16.3	13.8	11.5		
68								17.6	17.5	16.5	14.5	12.5					18.4	17.8	15.9	13.5	11.4		
70									16.4	15.8	14.0	12.1					17.3	16.8	15.6	13.1	11.2		
72									15.5	14.9	13.6	11.8						15.9	15.3	13.7	11.1		
74									14.5	14.0	13.2	11.5						15.0	14.4	12.3	10.9		
76									13.6	13.2	12.3	11.1						14.1	13.6	12.0	10.6		
78										12.3	11.4	10.8							12.8	11.6	10.2		
80										11.5	10.5	10.4							11.9	11.2	9.9		
82										10.6	9.8	9.7							11.1	10.5	9.5		
84											9.1	9.0								9.7	9.2		
86												8.4	8.4							9.0	8.8		
88													7.8	7.7							8.3		
90														7.1							7.6		
92															6.5							7.0	
94																5.9						6.4	
96																	5.4						5.8

Radius (m)	Derrick Mast 31.5m - Suspension Point 2 - Luffing Fly jib																															
	Telescopic Boom 54.3m									Telescopic Boom 60.0m																						
	21.0	28.0	35.0	42.0	49.0	56.0	63m	70.0	77.0	84.0	91.0	21.0	28.0	35.0	42.0	49.0	56.0	63.0	70.0	77.0	84.0	91.0										
20	75.0											61.0																				
22	71.0	61.0										61.0	50.0																			
26	66.0	61.0	50.0									61.0	50.0	41.5																		
28	60.0	59.0	50.0	42.0								59.0	50.0	41.5	34.5																	
30	51.0	56.0	50.0	42.0	34.5							53.0	50.0	41.5	34.5	28.5																
32	46.0	53.0	49.0	41.5	34.5	29.0						46.5	49.0	41.5	34.5	28.5																
34		46.5	48.0	41.5	34.5	29.0	24.5					47.0	41.5	34.0	28.4	24.0																
36		40.5	45.5	41.0	34.5	29.0	24.5	20.2				42.5	40.5	34.0	28.3	23.9	20.0															
38		37.5	42.5	41.0	34.0	28.9	24.5	20.2	16.5			38.0	39.5	34.0	28.1	23.8	19.9	16.0														
40			38.0	40.0	34.0	28.7	24.4	20.2	16.5	13.5		34.0	38.0	33.5	28.0	23.6	19.8	16.0	13.5													
42				34.0	37.0	34.0	28.6	24.2	20.2	16.5	13.5	10.5			35.0	33.0	27.9	23.6	19.7	16.0	13.5	10.5										
44					31.0	33.5	33.5	28.4	23.9	19.9	16.4	13.4	10.5			32.0	32.0	27.8	23.5	19.6	16.0	13.4	10.5	8.0								
46						30.0	33.0	33.0	28.3	23.6	19.6	16.3	13.4	10.5			28.8	31.0	27.5	23.4	19.5	15.9	13.3	10.5	8.0							
48							26.6	31.0	28.2	23.3	19.4	16.2	13.4	10.5				28.2	27.0	23.3	19.4	15.8	13.2	10.4	8.0							
50								23.9	28.2	28.1	23.0	19.2	15.9	13.4	10.5				25.3	26.4	23.2	19.3	15.8	13.2	10.4	7.9						
52								23.2	25.4	27.7	22.7	18.9	15.7	13.3	10.5				22.5	25.8	22.8	19.3	15.7	13.1	10.3	7.8						
54									22.7	25.6	22.5	18.7	15.5	13.2	10.4					22.8	22.5	19.2	15.6	13.0	10.2	7.7						
56									20.1	23.4	22.3	18.5	15.3	13.0	10.4					21.4	22.1	19.0	15.6	12.9	10.1	7.7						
58									19.1	21.2	22.1	18.3	15.1	12.9	10.3					19.2	21.7	18.7	15.5	12.9	10.1	7.6						
60										17.0	21.4	18.3	15.4	12.8	10.0	7.6				17.0	21.4	18.3	15.4	12.8	10.0	7.6						
62											17.0	20.3	18.0	14.7	12.5	10.1					19.5	17.8	15.3	12.7	9.9	7.5						
64												15.7	18.3	17.9	14.6	12.3	9.9				17.3	17.3	15.2	12.7	9.9	7.4						
66													15.3	16.4	17.6	14.5	12.2	9.8				15.2	16.8	14.8	12.5	9.8	7.4					
68														14.5	16.1	14.4	12.0	9.6					15.2	14.5	12.4	9.8	7.3					
70															12.7	14.7	14.3	11.9	9.5					13.6	14.1	12.2	9.7	7.3				
72																11.8	13.2	14.1	11.8	9.3					12.1	13.8	12.0	9.6	7.2			
74																	11.7	13.1	11.7	9.2						12.5	11.8	9.5	7.2			
76																		10.3	11.9	11.6	9.1						11.2	11.6	9.4	7.1		
78																			9.1	10.6	11.5	9.0						9.9	11.4	9.3	7.1	
80																				8.9	9.4	11.4	8.9					8.7	10.3	9.2	7.1	
82																					8.2	10.4	8.8						9.3	9.1	7.0	
84					</																											

Liebherr LTM 11000 DS

Lifting Capacities Main Boom 60° - Derrick Luffing Fly Jib (TDN)

Derrick Mast 31.5m - Suspension Point 1 - Luffing Fly jib																						
Radius (m)	Telescopic Boom 42.0m										Telescopic Boom 47.6m											
	21.0	28.0	35.0	42.0	49.0	56.0	63m	70.0	77.0	84.0	91.0	21.0	28.0	35.0	42.0	49.0	56.0	63.0	70.0	77.0	84.0	91.0
40	40.5																					
42	38.5																					
44	36.5	35.5												33.5								
46		33.5												31.5								
48		32.0												30.0	29.2							
50		30.5	29.5											27.8								
52		29.1	28.1											26.5	25.5							
54			26.8	25.7										25.3	24.3							
56			25.6	24.5											23.2	22.1						
58			24.6	23.4	22.5										22.2	21.1						
60				22.4	21.5										21.3	20.2						
62				21.5	20.5	19.4									20.4	19.3	18.0					
64				20.6	19.6	18.5										18.4	17.2					
66				19.8	18.8	17.7										17.7	16.4	15.6				
68				18.0	16.9	16.0										17.0	15.7	14.9				
70				17.3	16.2	15.3										15.0	14.2	12.8				
72				16.6	15.5	14.6	13.3									14.4	13.5	12.2				
74					14.9	13.9	12.7									13.8	12.9	11.5	10.6			
76					14.3	13.3	12.0	11.1								13.3	12.3	11.0	10.0			
78					13.8	12.7	11.4	10.5									11.8	10.4	9.4			
80					13.1	12.1	10.9	9.9									11.3	9.9	8.8	7.3		
82						11.6	10.3	9.4	8.1								10.8	9.4	8.3	6.7		
84						11.1	9.8	8.8	7.5								8.9	7.8	6.4	5.5		
86						10.7	9.3	8.3	6.9	6.0							8.5	7.3	6.1	5.2		
88							8.9	7.8	6.5	5.7							8.1	6.8	5.8	4.9	4.4	
90							8.5	7.4	6.2	5.4							7.7	6.5	5.5	4.6	4.1	
92							8.1	6.9	5.9	5.1								6.3	5.3	4.4	3.9	
94							7.7	6.6	5.7	4.8									6.0	5.0	4.1	3.6
96								6.3	5.4	4.6									5.8	4.8	3.9	3.4
98								6.1	5.2	4.3										4.6	3.7	3.2
100								5.9	4.9	4.1										4.4	3.5	2.9
102									4.7	3.9										4.2	3.3	2.7
104									4.5	3.7										4.1	3.1	2.6
106									4.4	3.5											2.9	2.4
108									3.9	3.3											2.8	2.2
110										3.1											2.7	2.0
112										3.0												
114										2.7												

Derrick Mast 31.5m - Suspension Point 2 - Luffing Fly jib																						
Radius (m)	Telescopic Boom 54.3m										Telescopic Boom 60.0m											
	21.0	28.0	35.0	42.0	49.0	56.0	63m	70.0	77.0	84.0	91.0	21.0	28.0	35.0	42.0	49.0	56.0	63.0	70.0	77.0	84.0	91.0
46	29.9																					
48	28.4																					
50	27.1	25.9													25.2							
52		24.7													24.0							
54		23.5													22.9	21.8						
56		22.5	21.5												20.8							
58		21.5	20.6												19.8	18.6						
60			19.6	18.3											19.0	17.8						
62			18.8	17.4												16.9						
64			18.0	16.6	15.7											16.2	15.1					
66				15.9	14.9											15.5	14.4					
68				15.2	14.2											14.9	13.7	12.3				
70				14.6	13.5	12.4										13.1	11.7					
72				14.0	12.9	11.7										12.5	11.1	10.2				
74					12.3	11.1	10.1									12.0	10.5	9.6				
76					11.8	10.6	9.5									10.0	9.0	7.3				
78					11.3	10.0	8.9	7.3								9.5	8.5	6.7				
80					9.5	8.4	6.7									9.0	8.0	6.4				
82					9.1	7.8	6.4									8.6	7.5	6.1	5.0			
84					8.7	7.4	6.1	5.1								7.0	5.8	4.8				
86					8.3	6.9	5.8	4.8									6.7	5.6	4.5	3.9		
88						6.6	5.5	4.5	4.0								6.5	5.3	4.3	3.6		
90						6.3	5.3	4.3	3.7								5.1	4.1	3.4			
92						6.1	5.1	4.0	3.5								4.9	3.8	3.2			
94							4.8	3.8	3.3								4.7	3.6	3.0			
96							4.6	3.6	3.0								4.6	3.5	2.8			
98							4.5	3.4	2.8									3.3	2.6			
100							4.3	3.2	2.6									3.1	2.4			
102								3.1	2.5									3.0	2.2			
104									2.9	2.3									2.1			
106									2.8	2.1												
108										2.0												

The charts that have been included have been reproduced from manufacturer specifications, and while every effort has been made to ensure their accuracy, we do not accept any responsibility for errors or omissions. We also need to draw your attention to the guidance notes on page 48 to assist you with your crane selection.

Liebherr LTM 11000 DS

Lifting Capacities Main Boom 68° - Luffing Fly Jib and Derrick Counterweight

160t counterweight 140t Derrick counterweight

Radius (m)	42m* ¹⁾							47.6m* ¹⁾															
	21m	28m	35m	42m	49m	56m	63m	70m	77m	84m	91m	21m	28m	35m	42m	49m	56m	63m	70m	77m	84m	91m	
32																							
34	70																						
36	63																						
38	57	61																					
40	51	55																					
42	46.5	49.5	53																				
44	45	48																					
46	41	43.5	46.5																				
48	37	40	42.5																				
50																							
52																							
54																							
56																							
58																							
60																							
62																							
64																							
66																							
68																							
70																							
72																							
74																							
76																							
78																							
80																							
82																							
84																							
86																							
88																							
90																							
92																							
94																							
96																							
98																							
100																							
102																							
104																							
106																							
108																							
110																							
112																							
I																							
II																							
III																							
* Denotes suspension point 1																							



1000
Tonne
Heavy Cranes



The charts that have been included have been reproduced from manufacturer specifications, and while every effort has been made to ensure their accuracy, we do not accept any responsibility for errors or omissions. We also need to draw your attention to the guidance notes on page 48 to assist you with your crane selection.

